

**RIPPLY2 (12Q15) Mouse Monoclonal antibody**  
**RIPPLY2 (12Q15) Mouse Monoclonal antibody**  
**Catalog # AP93847**

## Specification

---

### RIPPLY2 (12Q15) Mouse Monoclonal antibody - Product Information

Application	WB
Primary Accession	<a href="#">Q5TAB7</a>
Reactivity	Human
Clonality	Monoclonal
Calculated MW	13906

### RIPPLY2 (12Q15) Mouse Monoclonal antibody - Additional Information

**Gene ID** 134701

#### Other Names

Protein ripply2, RIPPLY2, C6orf159

#### Storage Conditions

-20°C

### RIPPLY2 (12Q15) Mouse Monoclonal antibody - Protein Information

**Name** RIPPLY2

**Synonyms** C6orf159

#### Function

Plays a role in somitogenesis. Required for somite segregation and establishment of rostrocaudal polarity in somites (By similarity).

#### Cellular Location

Nucleus {ECO:0000250|UniProtKB:Q2WG80}.

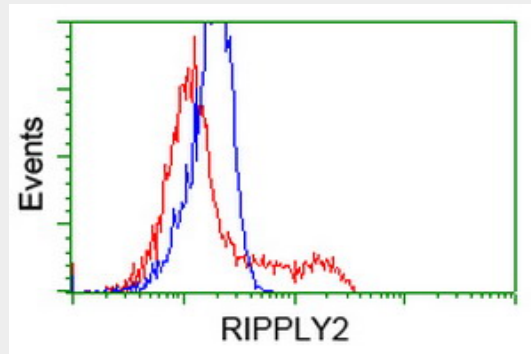
### RIPPLY2 (12Q15) Mouse Monoclonal antibody - Protocols

Provided below are standard protocols that you may find useful for product applications.

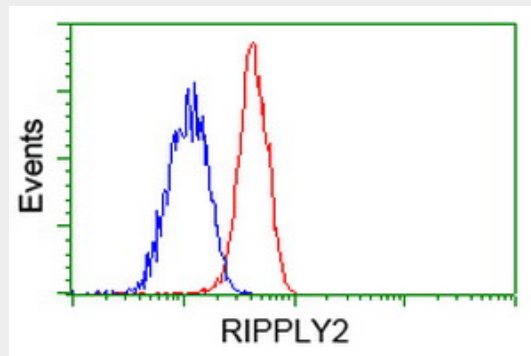
- [Western Blot](#)
- [Blocking Peptides](#)
- [Dot Blot](#)
- [Immunohistochemistry](#)
- [Immunofluorescence](#)
- [Immunoprecipitation](#)
- [Flow Cytometry](#)

- [Cell Culture](#)

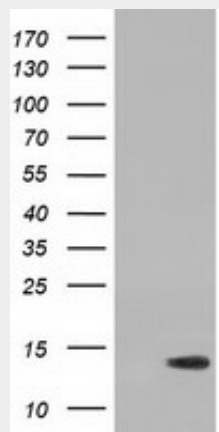
### RIPPLY2 (12Q15) Mouse Monoclonal antibody - Images



HEK293T cells transfected with either overexpress plasmid (Red) or empty vector control plasmid (Blue) were immunostained by anti-RIPPLY2 antibody (AP93847), and then analyzed by flow cytometry.



Flow cytometric Analysis of Jurkat cells, using anti-RIPPLY2 antibody (AP93847), (Red), compared to a nonspecific negative control antibody, (Blue).



HEK293T cells were transfected with the pCMV6-ENTRY control (Left lane) or pCMV6-ENTRY RIPPLY2 (Right lane) cDNA for 48 hrs and lysed. Equivalent amounts of cell lysates (5 ug per lane) were separated by SDS-PAGE and immunoblotted with anti-RIPPLY2 (Cat# AP93847). Positive lysates (100ug) and (20ug) can be purchased separately from biodragon.