

TTC32 (9P19) Mouse Monoclonal antibody
TTC32 (9P19) Mouse Monoclonal antibody
Catalog # AP93841

Specification

TTC32 (9P19) Mouse Monoclonal antibody - Product Information

Application	WB, IHC, IF
Primary Accession	Q510X7
Reactivity	Human
Clonality	Monoclonal
Calculated MW	17296

TTC32 (9P19) Mouse Monoclonal antibody - Additional Information

Gene ID 130502

Other Names

Tetratricopeptide repeat protein 32, TPR repeat protein 32, TTC32

Storage Conditions

-20°C

TTC32 (9P19) Mouse Monoclonal antibody - Protein Information

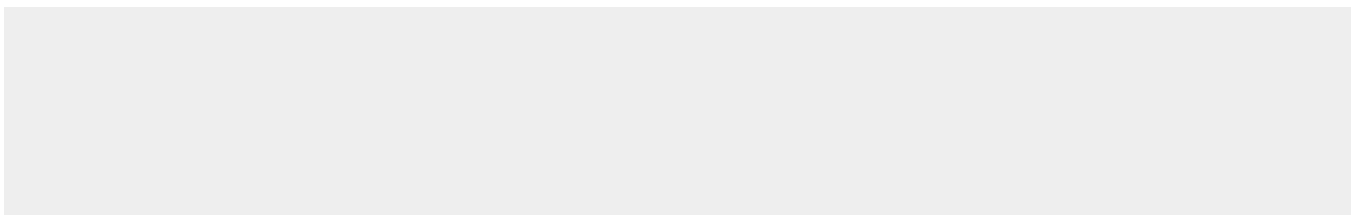
Name TTC32

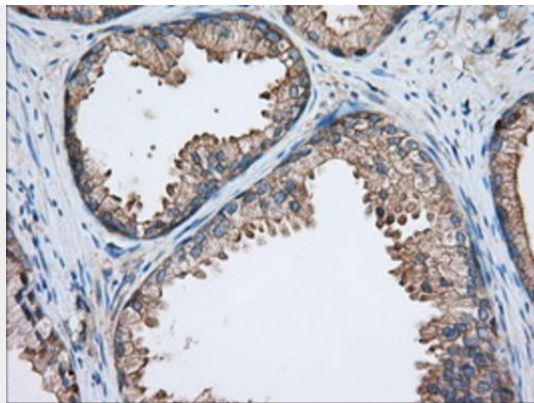
TTC32 (9P19) Mouse Monoclonal antibody - Protocols

Provided below are standard protocols that you may find useful for product applications.

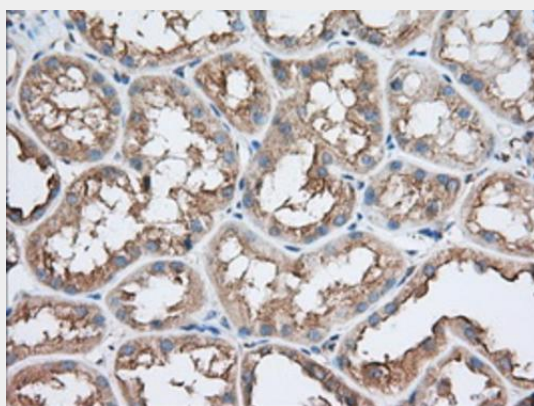
- [Western Blot](#)
- [Blocking Peptides](#)
- [Dot Blot](#)
- [Immunohistochemistry](#)
- [Immunofluorescence](#)
- [Immunoprecipitation](#)
- [Flow Cytometry](#)
- [Cell Culture](#)

TTC32 (9P19) Mouse Monoclonal antibody - Images

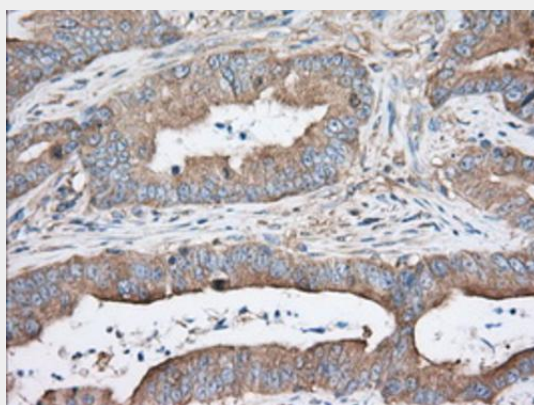




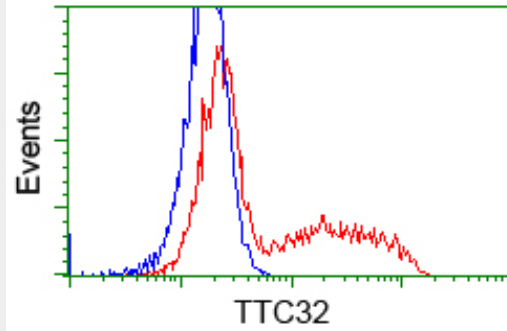
Immunohistochemical staining of paraffin-embedded Human prostate tissue within the normal limits using anti-TTC32 mouse monoclonal antibody. (Heat-induced epitope retrieval by 10mM citric buffer, pH6.0, 100°C for 10min, AP93841, Dilution 1:50)



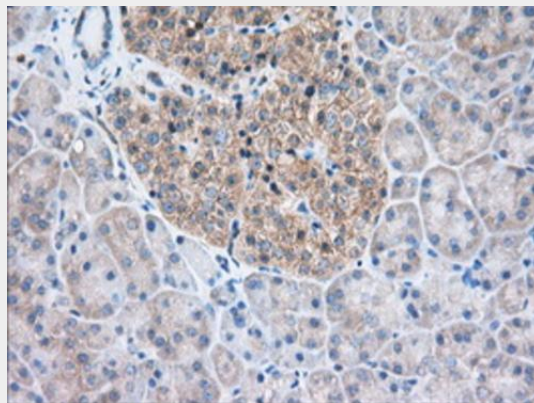
Immunohistochemical staining of paraffin-embedded Human Kidney tissue within the normal limits using anti-TTC32 mouse monoclonal antibody. (Heat-induced epitope retrieval by 10mM citric buffer, pH6.0, 100°C for 10min, AP93841, Dilution 1:50)



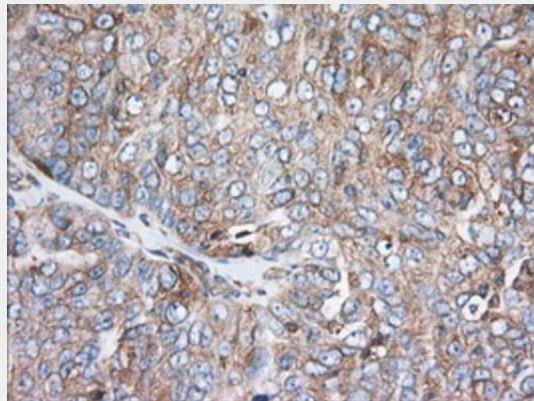
Immunohistochemical staining of paraffin-embedded Adenocarcinoma of Human colon tissue using anti-TTC32 mouse monoclonal antibody. (Heat-induced epitope retrieval by 10mM citric buffer, pH6.0, 100°C for 10min, AP93841, Dilution 1:50)



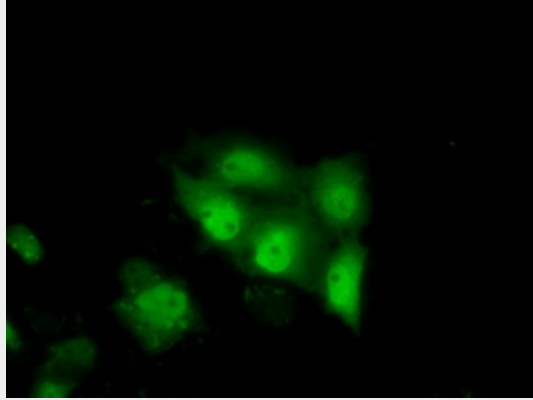
HEK293T cells transfected with either overexpress plasmid (Red) or empty vector control plasmid (Blue) were immunostained by anti-TTC32 antibody (AP93841), and then analyzed by flow cytometry.



Immunohistochemical staining of paraffin-embedded Human pancreas tissue within the normal limits using anti-TTC32 mouse monoclonal antibody. (Heat-induced epitope retrieval by 10mM citric buffer, pH6.0, 100°C for 10min, AP93841, Dilution 1:50)



Immunohistochemical staining of paraffin-embedded Adenocarcinoma of Human ovary tissue using anti-TTC32 mouse monoclonal antibody. (Heat-induced epitope retrieval by 10mM citric buffer, pH6.0, 100°C for 10min, AP93841, Dilution 1:50)



Anti-TTC32 mouse monoclonal antibody (AP93841) immunofluorescent staining of COS7 cells transiently transfected by pCMV6-ENTRY TTC32 .