

**DUPD1 (DUSP27) (13A9) Mouse Monoclonal antibody**  
**DUPD1 (DUSP27) (13A9) Mouse Monoclonal antibody**  
Catalog # AP93838**Specification**

---

**DUPD1 (DUSP27) (13A9) Mouse Monoclonal antibody - Product Information**

Application	WB
Primary Accession	<a href="#">Q68J44</a>
Reactivity	Human, Mouse
Clonality	Monoclonal
Calculated MW	25336

**DUPD1 (DUSP27) (13A9) Mouse Monoclonal antibody - Additional Information**

Gene ID 338599

**Other Names**

Dual specificity phosphatase 29 {ECO:0000312|HGNC:HGNC:23481}, Dual specificity phosphatase 27, Dual specificity phosphatase DUPD1, 3.1.3.16, 3.1.3.48, DUSP29 ([http://www.genenames.org/cgi-bin/gene\\_symbol\\_report?hgnc\\_id=23481](http://www.genenames.org/cgi-bin/gene_symbol_report?hgnc_id=23481) target="\_blank">HGNC:23481</a>)

**Storage Conditions**

-20°C

**DUPD1 (DUSP27) (13A9) Mouse Monoclonal antibody - Protein Information**Name DUSP29 ([HGNC:23481](#))**Function**

Dual specificity phosphatase able to dephosphorylate phosphotyrosine, phosphoserine and phosphothreonine residues within the same substrate, with a preference for phosphotyrosine as a substrate (PubMed:<http://www.uniprot.org/citations/17498703> target="\_blank">17498703</a>). Involved in the modulation of intracellular signaling cascades. In skeletal muscle regulates systemic glucose homeostasis by activating, AMPK, an energy sensor protein kinase (By similarity). Affects MAP kinase signaling through modulation of the MAPK1/2 cascade in skeletal muscle promoting muscle cell differentiation, development and atrophy (By similarity).

**Cellular Location**

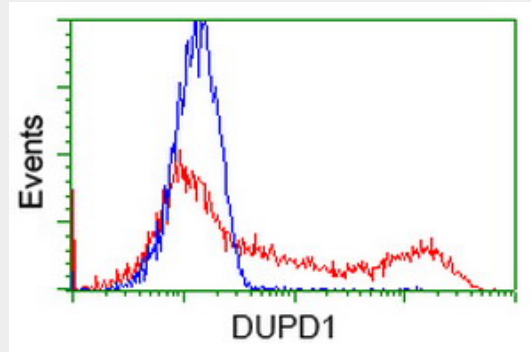
Cytoplasm. Nucleus {ECO:0000250|UniProtKB:Q8BK84}

**DUPD1 (DUSP27) (13A9) Mouse Monoclonal antibody - Protocols**

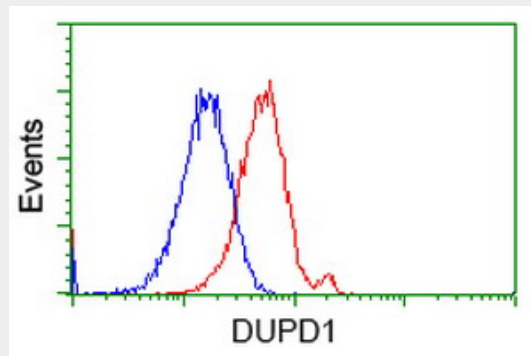
Provided below are standard protocols that you may find useful for product applications.

- [Western Blot](#)
- [Blocking Peptides](#)
- [Dot Blot](#)
- [Immunohistochemistry](#)
- [Immunofluorescence](#)
- [Immunoprecipitation](#)
- [Flow Cytometry](#)
- [Cell Culture](#)

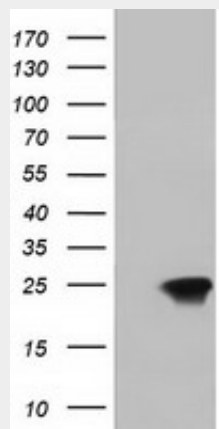
**DUPD1 (DUSP27) (13A9) Mouse Monoclonal antibody - Images**



HEK293T cells transfected with either overexpress plasmid (Red) or empty vector control plasmid (Blue) were immunostained by anti-DUPD1 antibody (AP93838), and then analyzed by flow cytometry.



Flow cytometric Analysis of HeLa cells, using anti-DUPD1 antibody (AP93838), (Red), compared to a nonspecific negative control antibody, (Blue).



HEK293T cells were transfected with the pCMV6-ENTRY control (Left lane) or pCMV6-ENTRY

DUPD1 (Right lane) cDNA for 48 hrs and lysed. Equivalent amounts of cell lysates (5 ug per lane) were separated by SDS-PAGE and immunoblotted with anti-DUPD1. Positive lysates (100ug) and (20ug) can be purchased separately from biodragon.