

S100A1 (14K18) Rabbit Monoclonal Antibody
S100A1 (14K18) Rabbit Monoclonal Antibody
Catalog # AP93761**Specification**

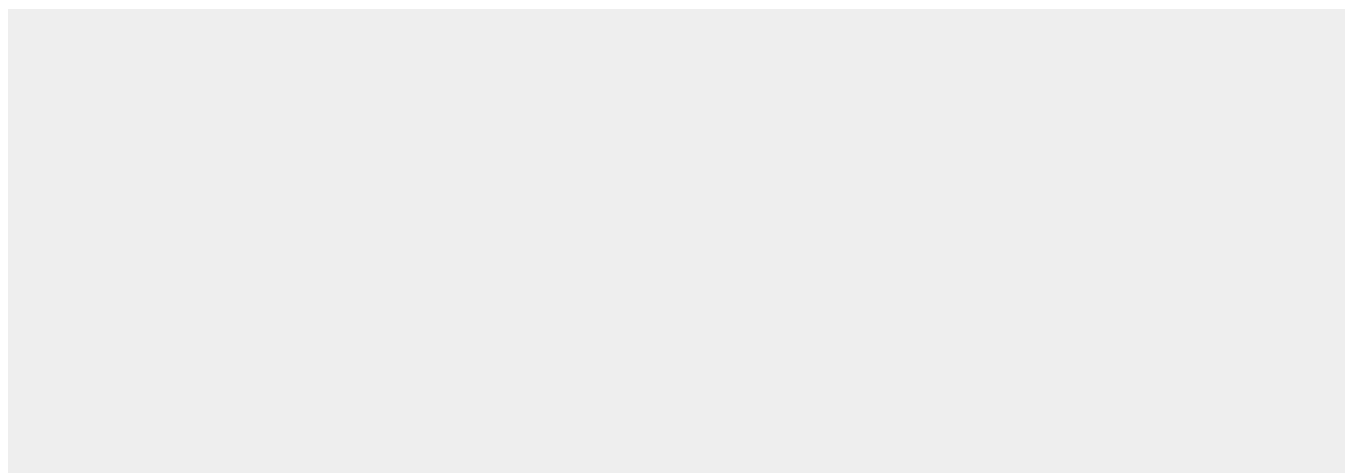
S100A1 (14K18) Rabbit Monoclonal Antibody - Product Information

Application	WB, IF, ICC
Primary Accession	P23297 , P56565 , P35467
Reactivity	Rat, Human, Mouse
Clonality	Monoclonal

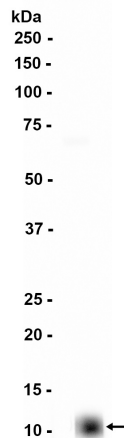
S100A1 (14K18) Rabbit Monoclonal Antibody - Additional Information**Storage Conditions**
-20°C**S100A1 (14K18) Rabbit Monoclonal Antibody - Protein Information****S100A1 (14K18) Rabbit Monoclonal Antibody - Protocols**

Provided below are standard protocols that you may find useful for product applications.

- [Western Blot](#)
- [Blocking Peptides](#)
- [Dot Blot](#)
- [Immunohistochemistry](#)
- [Immunofluorescence](#)
- [Immunoprecipitation](#)
- [Flow Cytometry](#)
- [Cell Culture](#)

S100A1 (14K18) Rabbit Monoclonal Antibody - Images

Mouse heart



Western blot analysis of extracts from Mouse heart tissue using AP93761 at 1:1000.

S100A1 (14K18) Rabbit Monoclonal Antibody - Background

The protein encoded by this gene is a member of the S100 family of proteins containing 2 EF-hand calcium-binding motifs. S100 proteins are localized in the cytoplasm and/or nucleus of a wide range of cells, and involved in the regulation of a number of cellular processes such as cell cycle progression and differentiation. S100 genes include at least 13 members which are located as a cluster on chromosome 1q21. This protein may function in stimulation of Ca^{2+} -induced Ca^{2+} release, inhibition of microtubule assembly, and inhibition of protein kinase C-mediated phosphorylation. Reduced expression of this protein has been implicated in cardiomyopathies. [provided by RefSeq, Jul 2008]