

SMARCC2/BAF170 (11S2) Rabbit Monoclonal Antibody
SMARCC2/BAF170 (11S2) Rabbit Monoclonal Antibody
Catalog # AP93727

Specification

SMARCC2/BAF170 (11S2) Rabbit Monoclonal Antibody - Product Information

| | |
|-------------------|---|
| Application | WB, IHC, IF, FC, ICC, IP |
| Primary Accession | Q8TAQ2 , Q6PDG5 |
| Reactivity | Rat, Human, Mouse |
| Clonality | Monoclonal |

SMARCC2/BAF170 (11S2) Rabbit Monoclonal Antibody - Additional Information

Storage Conditions
-20°C

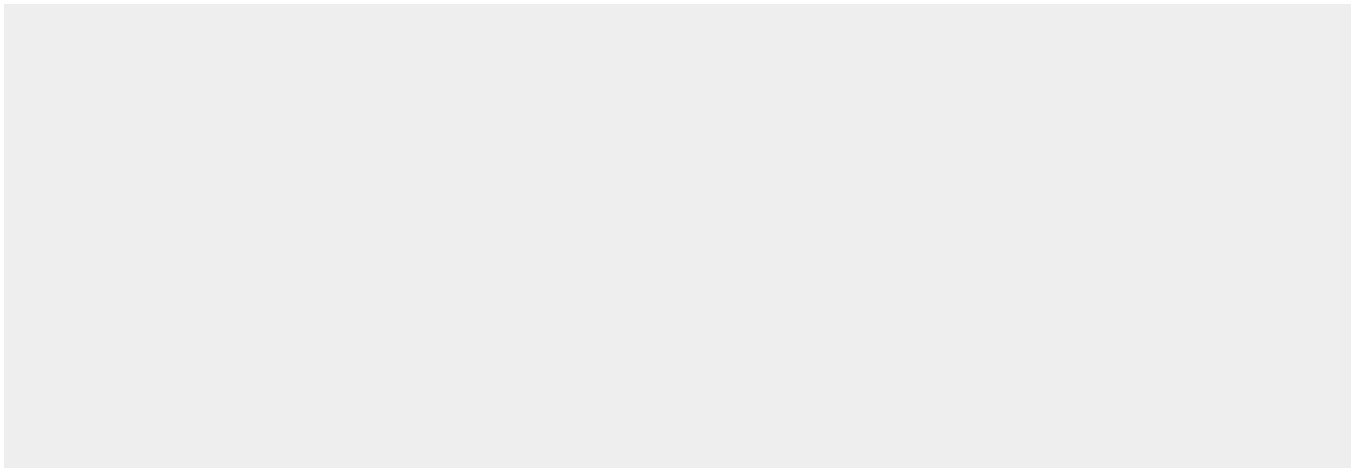
SMARCC2/BAF170 (11S2) Rabbit Monoclonal Antibody - Protein Information

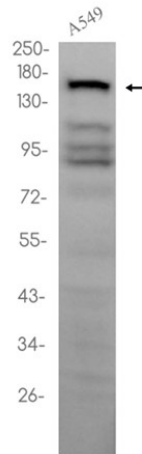
SMARCC2/BAF170 (11S2) Rabbit Monoclonal Antibody - Protocols

Provided below are standard protocols that you may find useful for product applications.

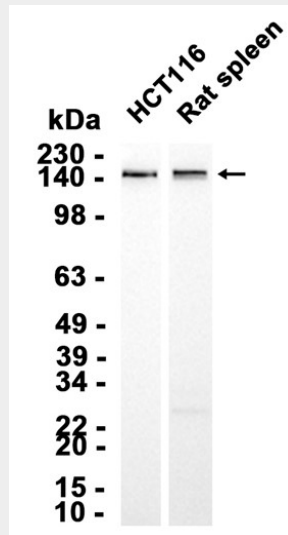
- [Western Blot](#)
- [Blocking Peptides](#)
- [Dot Blot](#)
- [Immunohistochemistry](#)
- [Immunofluorescence](#)
- [Immunoprecipitation](#)
- [Flow Cytometry](#)
- [Cell Culture](#)

SMARCC2/BAF170 (11S2) Rabbit Monoclonal Antibody - Images





Western blot analysis of extracts from A549 cells using AP93727 at 1:1000.



Western blot analysis of extracts from HCT116 cells and Rat spleen tissue using AP93727 at 1:1000.

SMARCC2/BAF170 (11S2) Rabbit Monoclonal Antibody - Background

The protein encoded by this gene is a member of the SWI/SNF family of proteins, whose members display helicase and ATPase activities and which are thought to regulate transcription of certain genes by altering the chromatin structure around those genes. The encoded protein is part of the large ATP-dependent chromatin remodeling complex SNF/SWI and contains a predicted leucine zipper motif typical of many transcription factors. Alternatively spliced transcript variants encoding different isoforms have been found for this gene. [provided by RefSeq, Jul 2008]