

**LIMK-1/2 (PTR2545) Mouse Monoclonal Antibody**  
**LIMK-1/2 (PTR2545) Mouse Monoclonal Antibody**  
**Catalog # AP93710****Specification**

---

**LIMK-1/2 (PTR2545) Mouse Monoclonal Antibody - Product Information**

Application	<b>WB, E</b>
Primary Accession	<a href="#">P53667/P53671</a>
Reactivity	<b>Human</b>
Clonality	<b>Monoclonal</b>

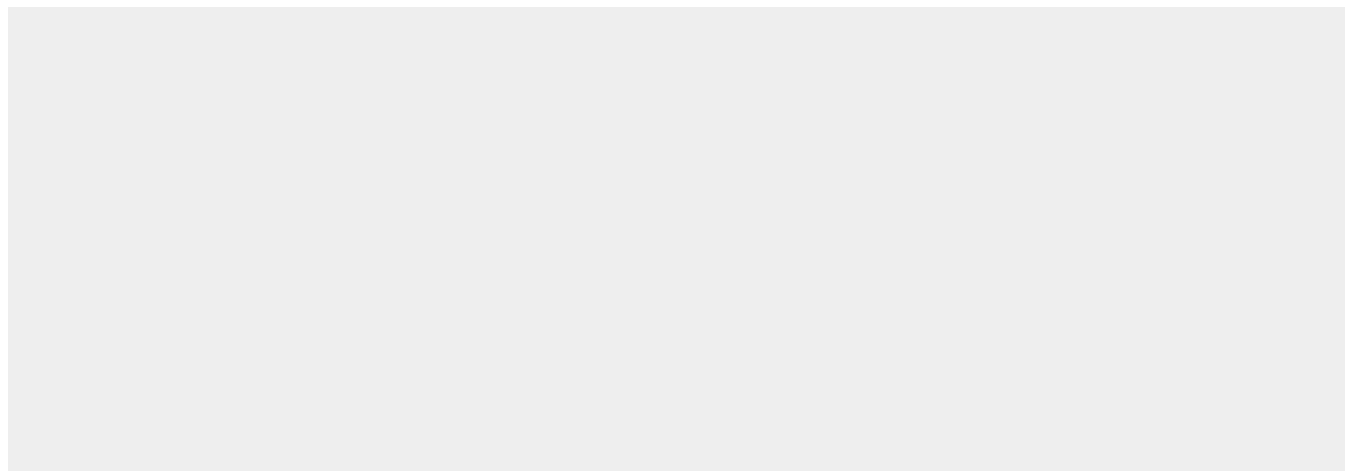
**LIMK-1/2 (PTR2545) Mouse Monoclonal Antibody - Additional Information****Storage Conditions**

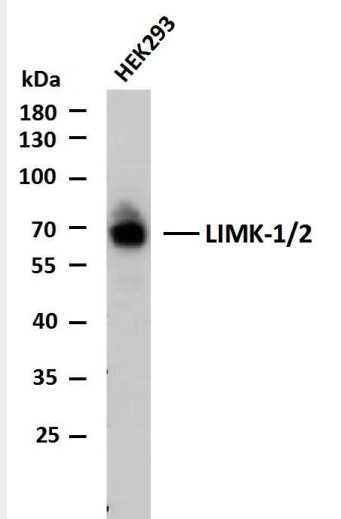
-20°C

**LIMK-1/2 (PTR2545) Mouse Monoclonal Antibody - Protein Information****LIMK-1/2 (PTR2545) Mouse Monoclonal Antibody - Protocols**

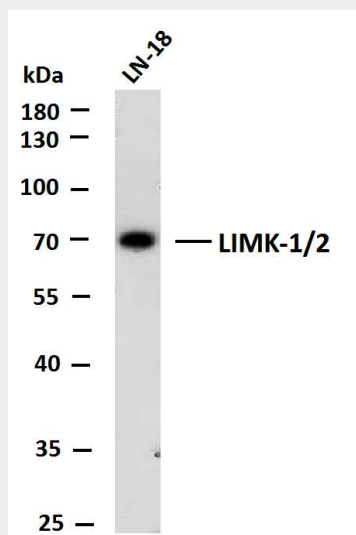
Provided below are standard protocols that you may find useful for product applications.

- [Western Blot](#)
- [Blocking Peptides](#)
- [Dot Blot](#)
- [Immunohistochemistry](#)
- [Immunofluorescence](#)
- [Immunoprecipitation](#)
- [Flow Cytometry](#)
- [Cell Culture](#)

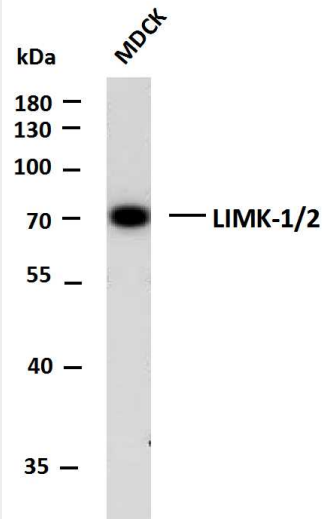
**LIMK-1/2 (PTR2545) Mouse Monoclonal Antibody - Images**



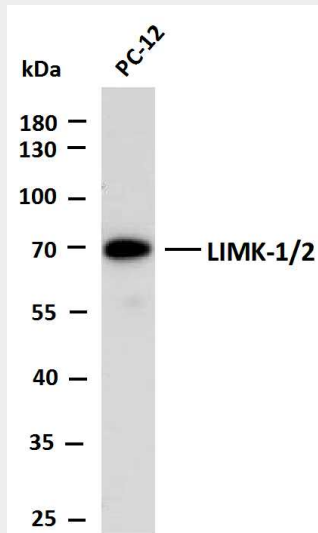
Whole cell lysates of HEK293 were separated by 10% SDS-PAGE, and the membrane was blotted with anti-LIMK-1/2 antibody. The HRP-conjugated Goat anti-Mouse IgG(H + L) antibody was used to detect the antibody. Lane 1: HEK293



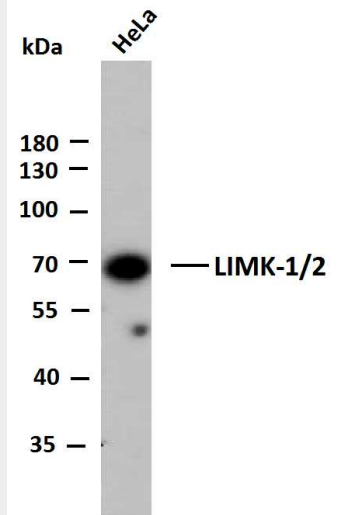
Whole cell lysates of LN-18 were separated by 10% SDS-PAGE, and the membrane was blotted with anti-LIMK-1/2 antibody. The HRP-conjugated Goat anti-Mouse IgG(H + L) antibody was used to detect the antibody. Lane 1: LN-18



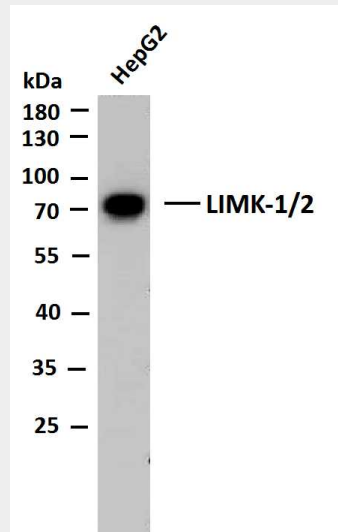
Whole cell lysates of MDCK were separated by 10% SDS-PAGE, and the membrane was blotted with anti-LIMK-1/2 antibody. The HRP-conjugated Goat anti-Mouse IgG(H + L) antibody was used to detect the antibody. Lane 1: MDCK



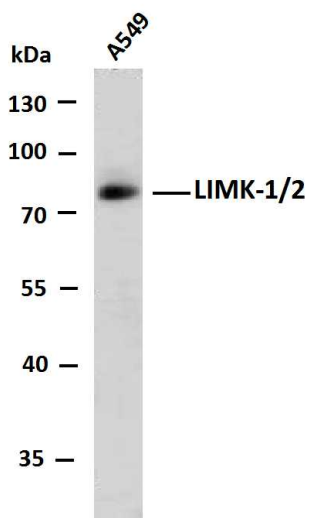
Whole cell lysates of PC-12 were separated by 10% SDS-PAGE, and the membrane was blotted with anti-LIMK-1/2 antibody. The HRP-conjugated Goat anti-Mouse IgG(H + L) antibody was used to detect the antibody. Lane 1: PC-12



Whole cell lysates of HeLa were separated by 10% SDS-PAGE, and the membrane was blotted with anti-LIMK-1/2 antibody. The HRP-conjugated Goat anti-Mouse IgG(H + L) antibody was used to detect the antibody. Lane 1: HeLa



Whole cell lysates of HepG2 were separated by 10% SDS-PAGE, and the membrane was blotted with anti-LIMK-1/2 antibody. The HRP-conjugated Goat anti-Mouse IgG(H + L) antibody was used to detect the antibody. Lane 1: HepG2



Whole cell lysates of A549 were separated by 10% SDS-PAGE, and the membrane was blotted with anti-LIMK-1/2 antibody. The HRP-conjugated Goat anti-Mouse IgG(H + L) antibody was used to detect the antibody. Lane 1: A549