

Cdc27/APC3 (19P19) Rabbit Monoclonal Antibody
Cdc27/APC3 (19P19) Rabbit Monoclonal Antibody
Catalog # AP93688**Specification**

Cdc27/APC3 (19P19) Rabbit Monoclonal Antibody - Product Information

Application	WB
Primary Accession	P30260
Reactivity	Rat, Human, Mouse
Clonality	Monoclonal
Calculated MW	91867

Cdc27/APC3 (19P19) Rabbit Monoclonal Antibody - Additional Information**Gene ID** 996**Other Names**

Cell division cycle protein 27 homolog, Anaphase-promoting complex subunit 3, APC3, CDC27 homolog, CDC27Hs, H-NUC, CDC27, ANAPC3, D0S1430E, D17S978E

Storage Conditions

-20°C

Cdc27/APC3 (19P19) Rabbit Monoclonal Antibody - Protein Information**Name** CDC27**Synonyms** ANAPC3, D0S1430E, D17S978E**Function**

Component of the anaphase promoting complex/cyclosome (APC/C), a cell cycle-regulated E3 ubiquitin ligase that controls progression through mitosis and the G1 phase of the cell cycle (PubMed:18485873). The APC/C complex acts by mediating ubiquitination and subsequent degradation of target proteins: it mainly mediates the formation of 'Lys-11'-linked polyubiquitin chains and, to a lower extent, the formation of 'Lys-48'- and 'Lys-63'-linked polyubiquitin chains (PubMed:18485873). The APC/C complex catalyzes assembly of branched 'Lys-11'-/'Lys-48'-linked branched ubiquitin chains on target proteins (PubMed:29033132).

Cellular Location

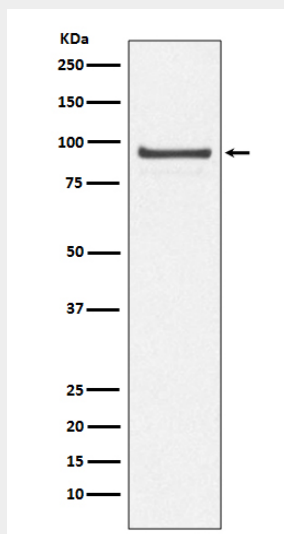
Nucleus. Cytoplasm, cytoskeleton, spindle

Cdc27/APC3 (19P19) Rabbit Monoclonal Antibody - Protocols

Provided below are standard protocols that you may find useful for product applications.

- [Western Blot](#)
- [Blocking Peptides](#)
- [Dot Blot](#)
- [Immunohistochemistry](#)
- [Immunofluorescence](#)
- [Immunoprecipitation](#)
- [Flow Cytometry](#)
- [Cell Culture](#)

Cdc27/APC3 (19P19) Rabbit Monoclonal Antibody - Images



Western blot analysis of Cdc27/APC3 expression in 293T cell lysate.