

CDC5 (16S9) Rabbit Monoclonal Antibody
CDC5 (16S9) Rabbit Monoclonal Antibody
Catalog # AP93687**Specification**

CDC5 (16S9) Rabbit Monoclonal Antibody - Product Information

Application	WB, IHC, IF, ICC
Primary Accession	O99459
Reactivity	Rat, Human, Mouse
Clonality	Monoclonal
Calculated MW	92251

CDC5 (16S9) Rabbit Monoclonal Antibody - Additional Information**Gene ID** 988**Other Names**

Cell division cycle 5-like protein, Cdc5-like protein, Pombe cdc5-related protein, CDC5L, KIAA0432, PCDC5RP

Storage Conditions

-20°C

CDC5 (16S9) Rabbit Monoclonal Antibody - Protein Information**Name** CDC5L**Synonyms** KIAA0432, PCDC5RP**Function**

DNA-binding protein involved in cell cycle control. May act as a transcription activator. Plays a role in pre-mRNA splicing as core component of precatalytic, catalytic and postcatalytic spliceosomal complexes (PubMed: [11991638](http://www.uniprot.org/citations/11991638), PubMed: [20176811](http://www.uniprot.org/citations/20176811), PubMed: [28076346](http://www.uniprot.org/citations/28076346), PubMed: [28502770](http://www.uniprot.org/citations/28502770), PubMed: [29301961](http://www.uniprot.org/citations/29301961), PubMed: [29360106](http://www.uniprot.org/citations/29360106), PubMed: [29361316](http://www.uniprot.org/citations/29361316), PubMed: [30705154](http://www.uniprot.org/citations/30705154), PubMed: [30728453](http://www.uniprot.org/citations/30728453)). Component of the PRP19-CDC5L complex that forms an integral part of the spliceosome and is required for activating pre-mRNA splicing. The PRP19-CDC5L complex may also play a role in the response to DNA damage (DDR) (PubMed: [20176811](http://www.uniprot.org/citations/20176811)). As a component of the minor spliceosome, involved in the splicing of U12- type introns in pre-mRNAs (Probable).

Cellular Location

Nucleus. Nucleus speckle. Cytoplasm Note=May shuttle between cytoplasm and nucleus

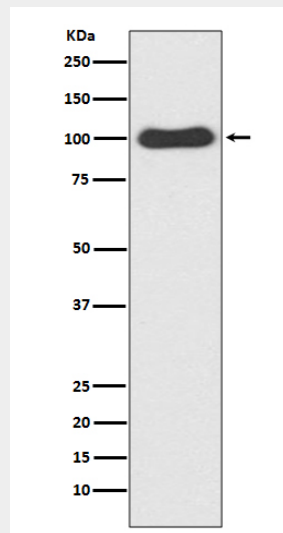
Tissue Location

Ubiquitously expressed in both fetal and adult tissues.

CDC5 (16S9) Rabbit Monoclonal Antibody - Protocols

Provided below are standard protocols that you may find useful for product applications.

- [Western Blot](#)
- [Blocking Peptides](#)
- [Dot Blot](#)
- [Immunohistochemistry](#)
- [Immunofluorescence](#)
- [Immunoprecipitation](#)
- [Flow Cytometry](#)
- [Cell Culture](#)

CDC5 (16S9) Rabbit Monoclonal Antibody - Images

Western blot analysis of CDC5 expression in HeLa cell lysate.