

Ras (7T10) Rabbit Monoclonal Antibody
Ras (7T10) Rabbit Monoclonal Antibody
Catalog # AP93667

Specification

Ras (7T10) Rabbit Monoclonal Antibody - Product Information

Application	WB, FC, IP
Primary Accession	P01111
Reactivity	Rat, Human, Mouse
Clonality	Monoclonal
Calculated MW	21229

Ras (7T10) Rabbit Monoclonal Antibody - Additional Information

Gene ID 4893

Other Names

GTPase NRas, 3.6.5.2, Transforming protein N-Ras, NRAS, HRAS1

Storage Conditions

-20°C

Ras (7T10) Rabbit Monoclonal Antibody - Protein Information

Name NRAS

Synonyms HRAS1

Function

Ras proteins bind GDP/GTP and possess intrinsic GTPase activity.

Cellular Location

Cell membrane; Lipid-anchor; Cytoplasmic side. Golgi apparatus membrane; Lipid-anchor
Note=Shuttles between the plasma membrane and the Golgi apparatus

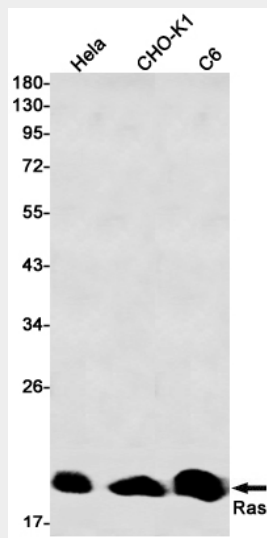
Ras (7T10) Rabbit Monoclonal Antibody - Protocols

Provided below are standard protocols that you may find useful for product applications.

- [Western Blot](#)
- [Blocking Peptides](#)
- [Dot Blot](#)
- [Immunohistochemistry](#)
- [Immunofluorescence](#)
- [Immunoprecipitation](#)
- [Flow Cytometry](#)

- [Cell Culture](#)

Ras (7T10) Rabbit Monoclonal Antibody - Images



Western blot detection of Ras in HeLa,CHO-K1,C6 cell lysates using Ras antibody(1:1000 diluted).