

**Bim (5Z18) Rabbit Monoclonal Antibody**  
**Bim (5Z18) Rabbit Monoclonal Antibody**  
Catalog # AP93655

## Specification

---

### Bim (5Z18) Rabbit Monoclonal Antibody - Product Information

Application	WB, IHC, IF, FC, ICC, IP
Primary Accession	<a href="#">O43521</a>
Reactivity	Rat, Human, Mouse
Clonality	Monoclonal
Calculated MW	22171

### Bim (5Z18) Rabbit Monoclonal Antibody - Additional Information

Gene ID 10018

#### Other Names

Bcl-2-like protein 11, Bcl2-L-11, Bcl2-interacting mediator of cell death, BCL2L11, BIM

#### Storage Conditions

-20°C

### Bim (5Z18) Rabbit Monoclonal Antibody - Protein Information

Name BCL2L11

Synonyms BIM

#### Function

Induces apoptosis and anoikis. Isoform BimL is more potent than isoform BimEL. Isoform Bim-alpha1, isoform Bim-alpha2 and isoform Bim-alpha3 induce apoptosis, although less potent than isoform BimEL, isoform BimL and isoform BimS. Isoform Bim-gamma induces apoptosis. Isoform Bim-alpha3 induces apoptosis possibly through a caspase- mediated pathway. Isoform BimAC and isoform BimABC lack the ability to induce apoptosis.

#### Cellular Location

Endomembrane system; Peripheral membrane protein. Note=Associated with intracytoplasmic membranes. [Isoform BimL]: Mitochondrion. [Isoform Bim-alpha1]: Mitochondrion.

#### Tissue Location

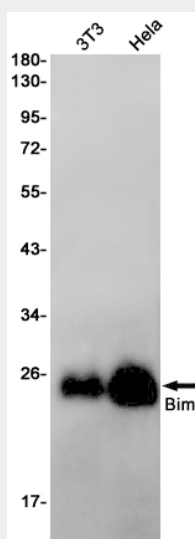
Isoform BimEL, isoform BimL and isoform BimS are the predominant isoforms and are widely expressed with tissue-specific variation. Isoform Bim-gamma is most abundantly expressed in small intestine and colon, and in lower levels in spleen, prostate, testis, heart, liver and kidney.

### Bim (5Z18) Rabbit Monoclonal Antibody - Protocols

Provided below are standard protocols that you may find useful for product applications.

- [Western Blot](#)
- [Blocking Peptides](#)
- [Dot Blot](#)
- [Immunohistochemistry](#)
- [Immunofluorescence](#)
- [Immunoprecipitation](#)
- [Flow Cytometry](#)
- [Cell Culture](#)

#### **Bim (5Z18) Rabbit Monoclonal Antibody - Images**



Western blot detection of Bim in 3T3, HeLa cell lysates using Bim antibody(1:1000 diluted).