

**ENO1 (9I18) Rabbit Monoclonal Antibody**  
**ENO1 (9I18) Rabbit Monoclonal Antibody**  
Catalog # AP93648**Specification**

---

**ENO1 (9I18) Rabbit Monoclonal Antibody - Product Information**

Application	WB, IHC, IF, FC, ICC, IP
Primary Accession	<a href="#">P06733</a>
Reactivity	Rat, Human, Mouse
Clonality	Monoclonal
Calculated MW	47169

**ENO1 (9I18) Rabbit Monoclonal Antibody - Additional Information****Gene ID** 2023**Other Names**

Alpha-enolase, 4.2.1.11, 2-phospho-D-glycerate hydro-lyase, C-myc promoter-binding protein, Enolase 1, MBP-1, MPB-1, Non-neural enolase, NNE, Phosphopyruvate hydratase, Plasminogen-binding protein, ENO1, ENO1L1, MBPB1, MPB1

**Storage Conditions**

-20°C

**ENO1 (9I18) Rabbit Monoclonal Antibody - Protein Information****Name** ENO1**Synonyms** ENO1L1, MBPB1, MPB1**Function**

Glycolytic enzyme that catalyzes the conversion of 2-phosphoglycerate to phosphoenolpyruvate (PubMed: [1369209](http://www.uniprot.org/citations/1369209), PubMed: [29775581](http://www.uniprot.org/citations/29775581)). In addition to glycolysis, involved in various processes such as growth control, hypoxia tolerance and allergic responses (PubMed: [10802057](http://www.uniprot.org/citations/10802057), PubMed: [12666133](http://www.uniprot.org/citations/12666133), PubMed: [2005901](http://www.uniprot.org/citations/2005901), PubMed: [29775581](http://www.uniprot.org/citations/29775581)). May also function in the intravascular and pericellular fibrinolytic system due to its ability to serve as a receptor and activator of plasminogen on the cell surface of several cell-types such as leukocytes and neurons (PubMed: [12666133](http://www.uniprot.org/citations/12666133)). Stimulates immunoglobulin production (PubMed: [1369209](http://www.uniprot.org/citations/1369209)).

**Cellular Location**

Cytoplasm. Cell membrane. Cytoplasm, myofibril, sarcomere, M line. Note=Can translocate to the

plasma membrane in either the homodimeric (alpha/alpha) or heterodimeric (alpha/gamma) form. ENO1 is localized to the M line

#### Tissue Location

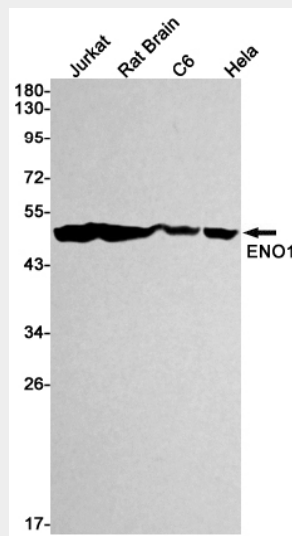
The alpha/alpha homodimer is expressed in embryo and in most adult tissues. The alpha/beta heterodimer and the beta/beta homodimer are found in striated muscle, and the alpha/gamma heterodimer and the gamma/gamma homodimer in neurons

#### ENO1 (9I18) Rabbit Monoclonal Antibody - Protocols

Provided below are standard protocols that you may find useful for product applications.

- [Western Blot](#)
- [Blocking Peptides](#)
- [Dot Blot](#)
- [Immunohistochemistry](#)
- [Immunofluorescence](#)
- [Immunoprecipitation](#)
- [Flow Cytometry](#)
- [Cell Culture](#)

#### ENO1 (9I18) Rabbit Monoclonal Antibody - Images



Western blot detection of ENO1 in Jurkat,Rat Brain,C6,HeLa cell lysates using ENO1 antibody(1:1000 diluted).