

TM220 Rabbit Polyclonal Antibody
TM220 Rabbit Polyclonal Antibody
Catalog # AP93548

Specification

TM220 Rabbit Polyclonal Antibody - Product Information

| | |
|-------------------|-------------------------|
| Application | WB |
| Primary Accession | Q6QAJ8 |
| Reactivity | Human, Mouse |
| Host | Polyclonal, Rabbit, IgG |
| Clonality | Polyclonal |
| Calculated MW | 17754 |

TM220 Rabbit Polyclonal Antibody - Additional Information

Gene ID 388335

Other Names

Transmembrane protein 220, TMEM220

Storage Conditions

-20°C

TM220 Rabbit Polyclonal Antibody - Protein Information

Name TMEM220

Cellular Location

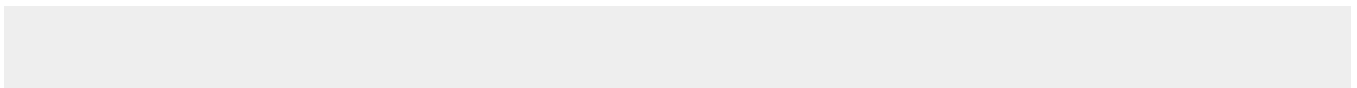
Membrane; Multi-pass membrane protein

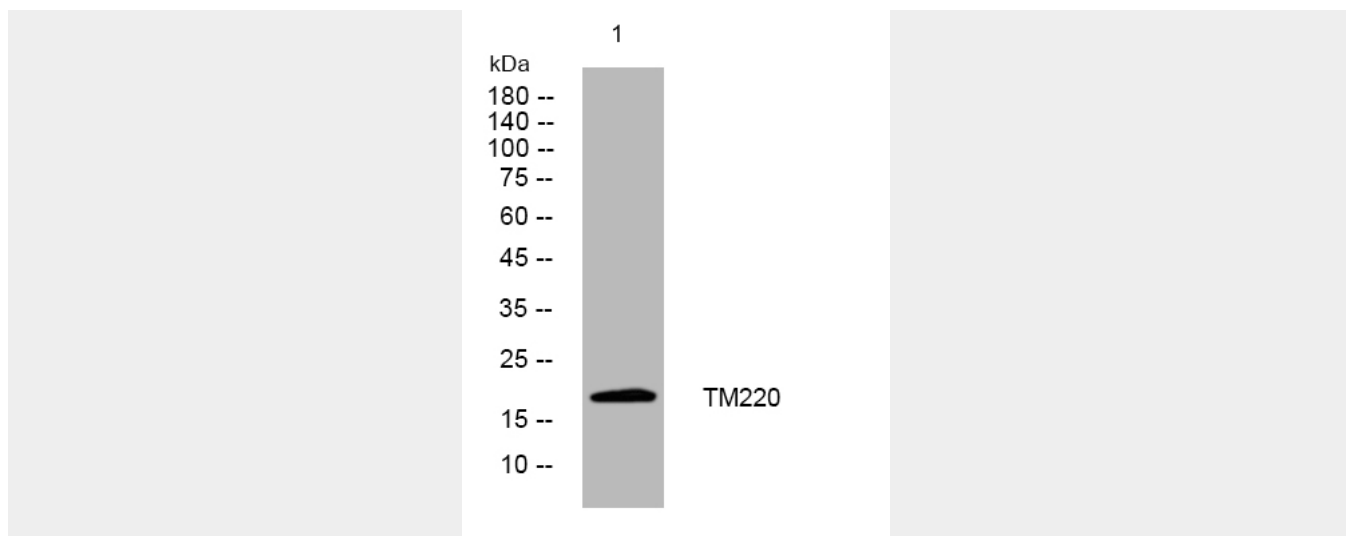
TM220 Rabbit Polyclonal Antibody - Protocols

Provided below are standard protocols that you may find useful for product applications.

- [Western Blot](#)
- [Blocking Peptides](#)
- [Dot Blot](#)
- [Immunohistochemistry](#)
- [Immunofluorescence](#)
- [Immunoprecipitation](#)
- [Flow Cytometry](#)
- [Cell Culture](#)

TM220 Rabbit Polyclonal Antibody - Images





Western blot analysis of lysates from KB cells, primary antibody was diluted at 1:1000, 4° over night