

KISHA Rabbit Polyclonal Antibody
KISHA Rabbit Polyclonal Antibody
Catalog # AP93545

Specification

KISHA Rabbit Polyclonal Antibody - Product Information

Application	IHC, IF
Primary Accession	Q8TBQ9
Reactivity	Human, Mouse
Host	Polyclonal, Rabbit, IgG
Clonality	Polyclonal
Calculated MW	8060

KISHA Rabbit Polyclonal Antibody - Additional Information

Gene ID 153339

Other Names

Protein kish-A, Transmembrane protein 167, Transmembrane protein 167A, TMEM167A, TMEM167

Storage Conditions

-20°C

KISHA Rabbit Polyclonal Antibody - Protein Information

Name TMEM167A

Synonyms TMEM167

Function

Involved in the early part of the secretory pathway.

Cellular Location

Golgi apparatus membrane; Single-pass type I membrane protein

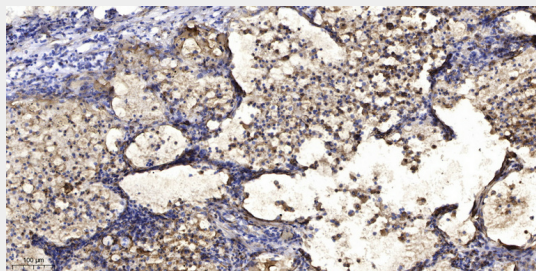
KISHA Rabbit Polyclonal Antibody - Protocols

Provided below are standard protocols that you may find useful for product applications.

- [Western Blot](#)
- [Blocking Peptides](#)
- [Dot Blot](#)
- [Immunohistochemistry](#)
- [Immunofluorescence](#)
- [Immunoprecipitation](#)
- [Flow Cytometry](#)

- [Cell Culture](#)

KISHA Rabbit Polyclonal Antibody - Images



Immunohistochemical analysis of paraffin-embedded human Squamous cell carcinoma of lung. 1, Antibody was diluted at 1:200(4° overnight). 2, Tris-EDTA,pH9.0 was used for antigen retrieval. 3,Secondary antibody was diluted at 1:200(room temperature, 45min).