

**SPIT3 Rabbit Polyclonal Antibody**  
**SPIT3 Rabbit Polyclonal Antibody**  
**Catalog # AP93539**

## Specification

---

### SPIT3 Rabbit Polyclonal Antibody - Product Information

Application	IHC, IF
Primary Accession	<a href="#">P49223</a>
Reactivity	Rat, Human
Host	Polyclonal, Rabbit, IgG
Clonality	Polyclonal
Calculated MW	10252

### SPIT3 Rabbit Polyclonal Antibody - Additional Information

**Gene ID** 10816

#### Other Names

Kunitz-type protease inhibitor 3, HKIB9, SPINT3

#### Storage Conditions

-20°C

### SPIT3 Rabbit Polyclonal Antibody - Protein Information

**Name** SPINT3

#### Cellular Location

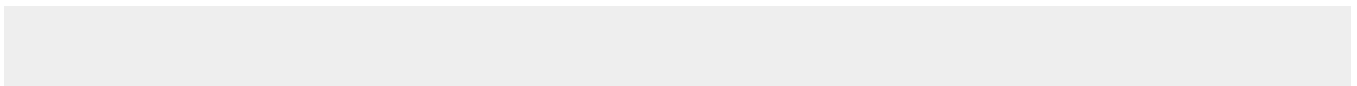
Secreted.

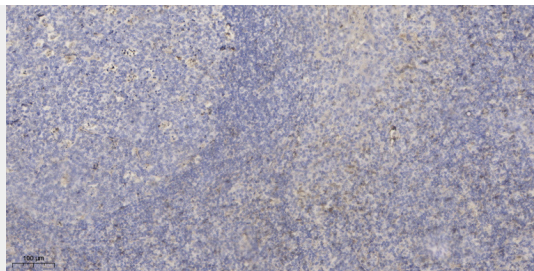
### SPIT3 Rabbit Polyclonal Antibody - Protocols

Provided below are standard protocols that you may find useful for product applications.

- [Western Blot](#)
- [Blocking Peptides](#)
- [Dot Blot](#)
- [Immunohistochemistry](#)
- [Immunofluorescence](#)
- [Immunoprecipitation](#)
- [Flow Cytometry](#)
- [Cell Culture](#)

### SPIT3 Rabbit Polyclonal Antibody - Images





Immunohistochemical analysis of paraffin-embedded human tonsil. 1, Antibody was diluted at 1:200(4° overnight). 2, Tris-EDTA,pH9.0 was used for antigen retrieval. 3,Secondary antibody was diluted at 1:200(room temperature, 30min).