

**LCN12 Rabbit Polyclonal Antibody**  
**LCN12 Rabbit Polyclonal Antibody**  
**Catalog # AP93533****Specification**

---

**LCN12 Rabbit Polyclonal Antibody - Product Information**

Application	WB, IHC, E
Primary Accession	<a href="#">Q6JVE5</a>
Reactivity	Rat, Human, Mouse
Host	Polyclonal, Rabbit, IgG
Clonality	Polyclonal
Calculated MW	21500

**LCN12 Rabbit Polyclonal Antibody - Additional Information****Gene ID** 286256**Other Names**

Epididymal-specific lipocalin-12, LCN12

**Storage Conditions**

-20°C

**LCN12 Rabbit Polyclonal Antibody - Protein Information****Name** LCN12**Function**

Binds all-trans retinoic acid and may act as a retinoid carrier protein within the epididymis. May play a role in male fertility (By similarity).

**Cellular Location**

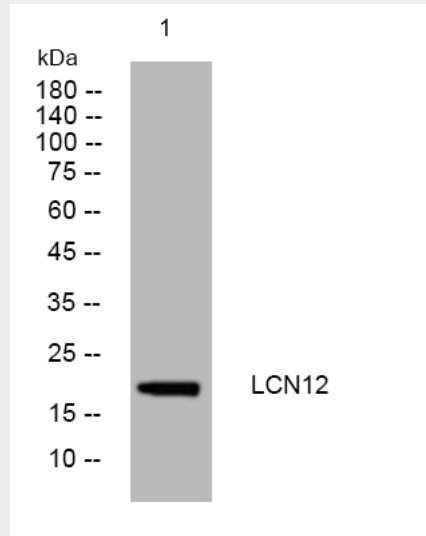
Secreted.

**LCN12 Rabbit Polyclonal Antibody - Protocols**

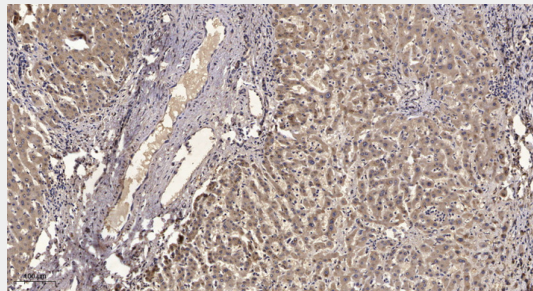
Provided below are standard protocols that you may find useful for product applications.

- [Western Blot](#)
- [Blocking Peptides](#)
- [Dot Blot](#)
- [Immunohistochemistry](#)
- [Immunofluorescence](#)
- [Immunoprecipitation](#)
- [Flow Cytometry](#)
- [Cell Culture](#)

## LCN12 Rabbit Polyclonal Antibody - Images



Western blot analysis of lysates from MCF-7 cells, primary antibody was diluted at 1:1000, 4° overnight



Immunohistochemical analysis of paraffin-embedded human liver cancer. 1, Antibody was diluted at 1:200(4° overnight). 2, Tris-EDTA,pH9.0 was used for antigen retrieval. 3,Secondary antibody was diluted at 1:200(room temperature, 45min).

## LCN12 Rabbit Polyclonal Antibody - Background

Members of the lipocalin family, such as LCN12, have a common structure consisting of an 8-stranded antiparallel beta-barrel that forms a cup-shaped ligand-binding pocket or calyx. Lipocalins generally bind small hydrophobic ligands and transport them to specific cells (Suzuki et al., 2004 [PubMed 15363845]).[supplied by OMIM, Aug 2009],