

FA18A Rabbit Polyclonal Antibody
FA18A Rabbit Polyclonal Antibody
Catalog # AP93527**Specification**

FA18A Rabbit Polyclonal Antibody - Product Information

| | |
|-------------------|-------------------------|
| Application | WB |
| Primary Accession | A6NH52 |
| Reactivity | Rat, Human |
| Host | Polyclonal, Rabbit, IgG |
| Clonality | Polyclonal |
| Calculated MW | 24111 |

FA18A Rabbit Polyclonal Antibody - Additional Information**Gene ID** 780776**Other Names**

Golgi apparatus membrane protein TVP23 homolog A, TVP23A, FAM18A

Storage Conditions

-20°C

FA18A Rabbit Polyclonal Antibody - Protein Information**Name** TVP23A**Synonyms** FAM18A**Cellular Location**

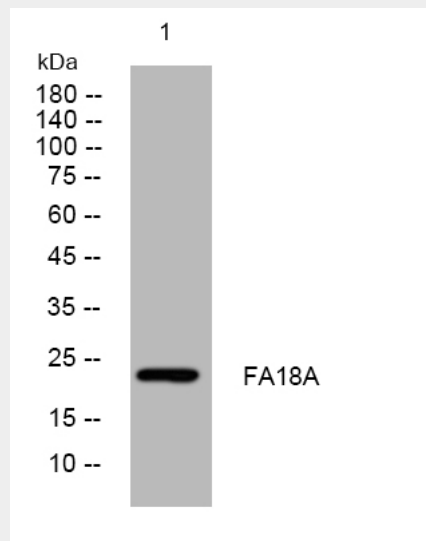
Membrane; Multi-pass membrane protein

FA18A Rabbit Polyclonal Antibody - Protocols

Provided below are standard protocols that you may find useful for product applications.

- [Western Blot](#)
- [Blocking Peptides](#)
- [Dot Blot](#)
- [Immunohistochemistry](#)
- [Immunofluorescence](#)
- [Immunoprecipitation](#)
- [Flow Cytometry](#)
- [Cell Culture](#)

FA18A Rabbit Polyclonal Antibody - Images



Western blot analysis of lysates from HeLa cells, primary antibody was diluted at 1:1000, 4° over night

FA18A Rabbit Polyclonal Antibody - Background

This gene encodes a membrane protein associated with the Golgi apparatus, which plays a crucial role in intracellular vesicular transport. The encoded protein is likely associated with the late (trans) Golgi compartments, which are involved in the delivery of secretory and membrane proteins to the endosome, lysosome or the plasma membrane. Alternative splicing results in multiple transcript variants. [provided by RefSeq, Jan 2016],