

1A32 Rabbit Polyclonal Antibody
1A32 Rabbit Polyclonal Antibody
Catalog # AP93521

Specification

1A32 Rabbit Polyclonal Antibody - Product Information

Application	WB
Primary Accession	P10314
Reactivity	Rat, Human
Host	Polyclonal, Rabbit, IgG
Clonality	Polyclonal

1A32 Rabbit Polyclonal Antibody - Additional Information

Storage Conditions
-20°C

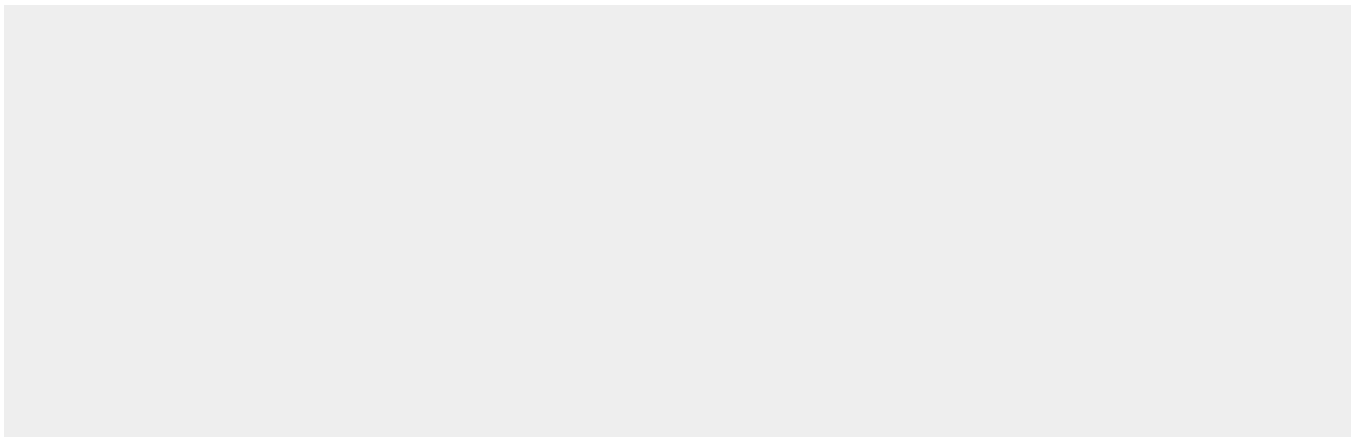
1A32 Rabbit Polyclonal Antibody - Protein Information

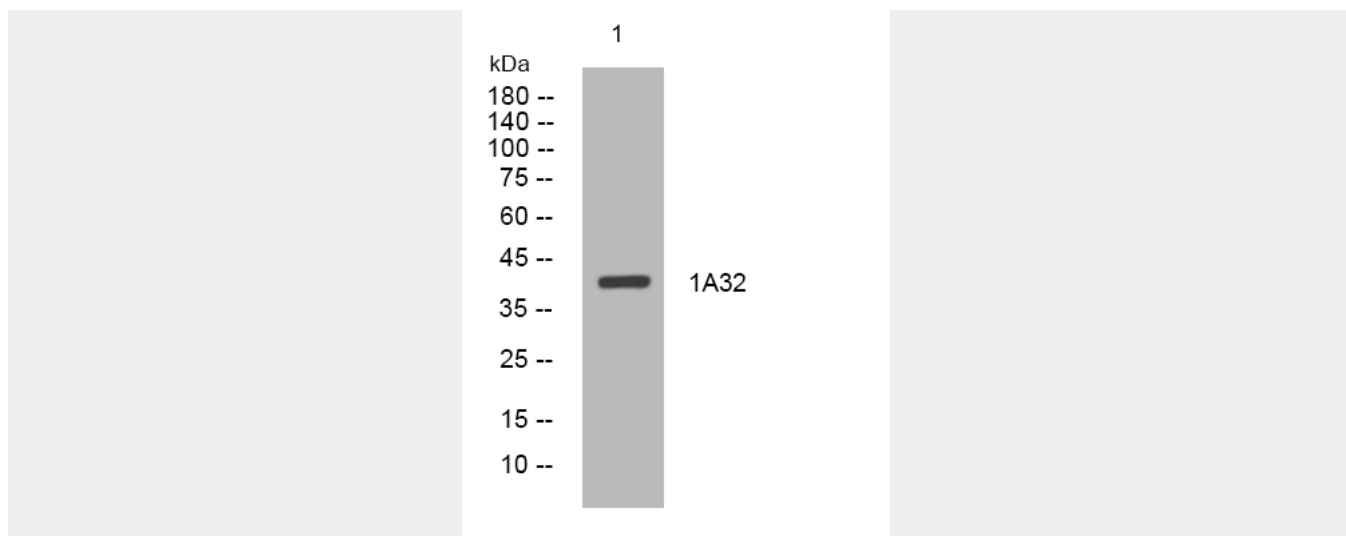
1A32 Rabbit Polyclonal Antibody - Protocols

Provided below are standard protocols that you may find useful for product applications.

- [Western Blot](#)
- [Blocking Peptides](#)
- [Dot Blot](#)
- [Immunohistochemistry](#)
- [Immunofluorescence](#)
- [Immunoprecipitation](#)
- [Flow Cytometry](#)
- [Cell Culture](#)

1A32 Rabbit Polyclonal Antibody - Images





Western blot analysis of lysates from U2OS cells, primary antibody was diluted at 1:1000, 4° over night