

APM2 Rabbit Polyclonal Antibody
APM2 Rabbit Polyclonal Antibody
Catalog # AP93504**Specification**

APM2 Rabbit Polyclonal Antibody - Product Information

Application	IHC, IF
Primary Accession	Q15847
Reactivity	Rat, Human
Host	Polyclonal, Rabbit, IgG
Clonality	Polyclonal
Calculated MW	7855

APM2 Rabbit Polyclonal Antibody - Additional Information**Gene ID** 10974**Other Names**

Adipogenesis regulatory factor, Adipogenesis factor rich in obesity, Adipose most abundant gene transcript 2 protein, Adipose-specific protein 2, apM-2, ADIRF, AFRO, APM2, C10orf116

Storage Conditions

-20°C

APM2 Rabbit Polyclonal Antibody - Protein Information**Name** ADIRF**Synonyms** AFRO, APM2, C10orf116**Function**

Plays a role in fat cell development; promotes adipogenic differentiation and stimulates transcription initiation of master adipogenesis factors like PPARG and CEBPA at early stages of preadipocyte differentiation. Its overexpression confers resistance to the anticancer chemotherapeutic drug cisplatin.

Cellular Location

Nucleus.

Tissue Location

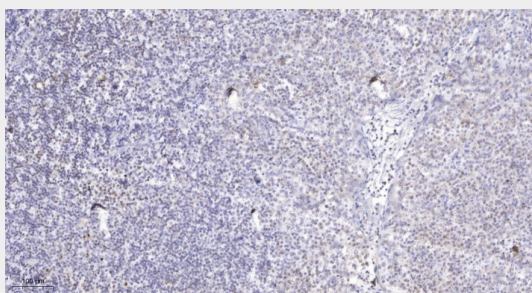
Expressed in adipose tissue (at protein level). Highly expressed in omental and subcutaneous adipose tissues. Expressed in heart, cornea, liver, kidney and spleen
{ECO:0000269|PubMed:23239344, ECO:0000269|Ref.4}

APM2 Rabbit Polyclonal Antibody - Protocols

Provided below are standard protocols that you may find useful for product applications.

- [Western Blot](#)
- [Blocking Peptides](#)
- [Dot Blot](#)
- [Immunohistochemistry](#)
- [Immunofluorescence](#)
- [Immunoprecipitation](#)
- [Flow Cytometry](#)
- [Cell Culture](#)

APM2 Rabbit Polyclonal Antibody - Images



Immunohistochemical analysis of paraffin-embedded human tonsil. 1, Antibody was diluted at 1:200(4° overnight). 2, Tris-EDTA,pH9.0 was used for antigen retrieval. 3,Secondary antibody was diluted at 1:200(room temperature, 45min).

APM2 Rabbit Polyclonal Antibody - Background

APM2 gene is exclusively expressed in adipose tissue. Its function is currently unknown. [provided by RefSeq, Jul 2008],