

RRP15 Rabbit Polyclonal Antibody
RRP15 Rabbit Polyclonal Antibody
Catalog # AP93478**Specification**

RRP15 Rabbit Polyclonal Antibody - Product Information

Application	WB
Primary Accession	O9Y3B9
Reactivity	Rat, Human, Mouse
Host	Polyclonal, Rabbit, IgG
Clonality	Polyclonal
Calculated MW	31484

RRP15 Rabbit Polyclonal Antibody - Additional Information**Gene ID** 51018**Other Names**

RRP15-like protein, Ribosomal RNA-processing protein 15, RRP15, KIAA0507

Storage Conditions

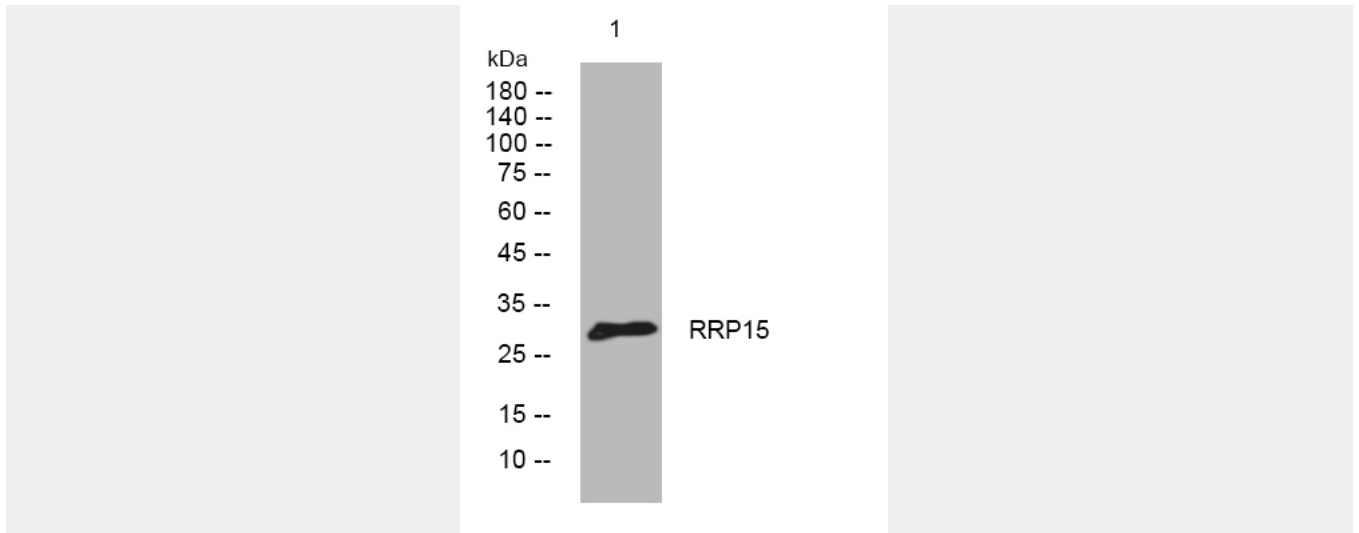
-20°C

RRP15 Rabbit Polyclonal Antibody - Protein Information**Name** RRP15**Synonyms** KIAA0507**RRP15 Rabbit Polyclonal Antibody - Protocols**

Provided below are standard protocols that you may find useful for product applications.

- [Western Blot](#)
- [Blocking Peptides](#)
- [Dot Blot](#)
- [Immunohistochemistry](#)
- [Immunofluorescence](#)
- [Immunoprecipitation](#)
- [Flow Cytometry](#)
- [Cell Culture](#)

RRP15 Rabbit Polyclonal Antibody - Images

Western blot analysis of lysates from A431 cells, primary antibody was diluted at 1:1000, 4° over night

RRP15 Rabbit Polyclonal Antibody - Background

This gene encodes a protein that co-purifies with human nucleoli. A similar protein in budding yeast is a component of pre-60S ribosomal particles, and is required for the early maturation steps of the 60S subunit. [provided by RefSeq, Jul 2008],