

DUPD1 Rabbit Polyclonal Antibody
DUPD1 Rabbit Polyclonal Antibody
Catalog # AP93471**Specification**

DUPD1 Rabbit Polyclonal Antibody - Product Information

Application	WB
Primary Accession	Q68J44
Reactivity	Rat, Human, Mouse
Host	Polyclonal, Rabbit, IgG
Clonality	Polyclonal
Calculated MW	25336

DUPD1 Rabbit Polyclonal Antibody - Additional Information

Gene ID 338599

Other Names

Dual specificity phosphatase 29 {ECO:0000312|HGNC:HGNC:23481}, Dual specificity phosphatase 27, Dual specificity phosphatase DUPD1, 3.1.3.16, 3.1.3.48, DUSP29 (http://www.genenames.org/cgi-bin/gene_symbol_report?hgnc_id=23481 target="_blank">HGNC:23481)

Storage Conditions

-20°C

DUPD1 Rabbit Polyclonal Antibody - Protein InformationName DUSP29 ([HGNC:23481](#))**Function**

Dual specificity phosphatase able to dephosphorylate phosphotyrosine, phosphoserine and phosphothreonine residues within the same substrate, with a preference for phosphotyrosine as a substrate (PubMed:<http://www.uniprot.org/citations/17498703>). Involved in the modulation of intracellular signaling cascades. In skeletal muscle regulates systemic glucose homeostasis by activating, AMPK, an energy sensor protein kinase (By similarity). Affects MAP kinase signaling through modulation of the MAPK1/2 cascade in skeletal muscle promoting muscle cell differentiation, development and atrophy (By similarity).

Cellular Location

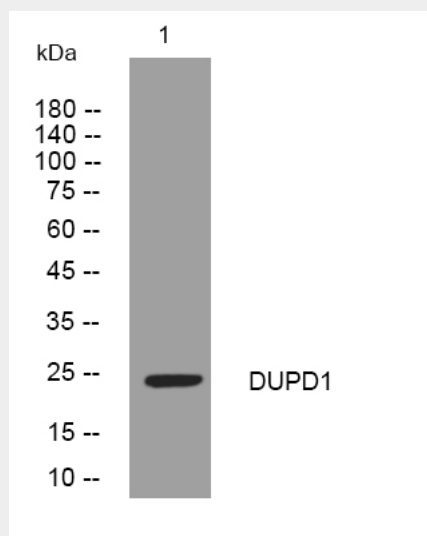
Cytoplasm. Nucleus {ECO:0000250|UniProtKB:Q8BK84}

DUPD1 Rabbit Polyclonal Antibody - Protocols

Provided below are standard protocols that you may find useful for product applications.

- [Western Blot](#)
- [Blocking Peptides](#)
- [Dot Blot](#)
- [Immunohistochemistry](#)
- [Immunofluorescence](#)
- [Immunoprecipitation](#)
- [Flow Cytometry](#)
- [Cell Culture](#)

DUPD1 Rabbit Polyclonal Antibody - Images



Western blot analysis of lysates from VEC cells, primary antibody was diluted at 1:1000, 4° over night