

**CT452 Rabbit Polyclonal Antibody**  
**CT452 Rabbit Polyclonal Antibody**  
Catalog # AP93465**Specification**

---

**CT452 Rabbit Polyclonal Antibody - Product Information**

Application	WB
Primary Accession	<a href="#">O5DJT8</a>
Reactivity	Rat, Human
Host	Polyclonal, Rabbit, IgG
Clonality	Polyclonal
Calculated MW	21363

**CT452 Rabbit Polyclonal Antibody - Additional Information**

**Gene ID** 102723680;102723737;728911

**Other Names**

Cancer/testis antigen family 45 member A2 {ECO:0000312|HGNC:HGNC:28400}, Cancer/testis antigen 45-2, Cancer/testis antigen 45A2, CT45A2 ([HGNC:28400](http://www.genenames.org/cgi-bin/gene_symbol_report?hgnc_id=28400))

**Storage Conditions**

-20°C

**CT452 Rabbit Polyclonal Antibody - Protein Information**

**Name** CT45A2 ([HGNC:28400](#))

**Tissue Location**

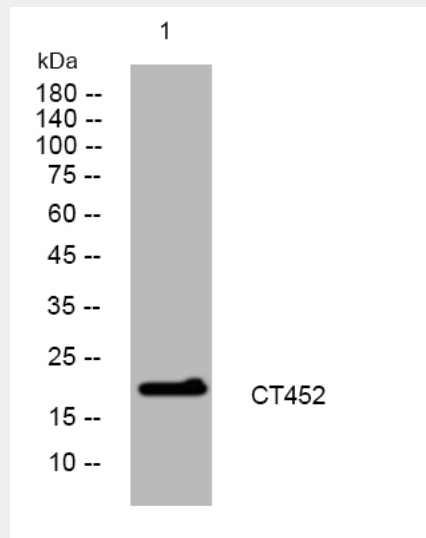
Testis specific. Expressed in cancer cell lines.

**CT452 Rabbit Polyclonal Antibody - Protocols**

Provided below are standard protocols that you may find useful for product applications.

- [Western Blot](#)
- [Blocking Peptides](#)
- [Dot Blot](#)
- [Immunohistochemistry](#)
- [Immunofluorescence](#)
- [Immunoprecipitation](#)
- [Flow Cytometry](#)
- [Cell Culture](#)

**CT452 Rabbit Polyclonal Antibody - Images**



Western blot analysis of lysates from THP-1 cells, primary antibody was diluted at 1:1000, 4° over night

#### **CT452 Rabbit Polyclonal Antibody - Background**

This gene represents one of a cluster of several similar genes located on the q arm of chromosome X. The genes in this cluster encode members of the cancer/testis (CT) family of antigens, and are distinct from other CT antigens. These antigens are thought to be novel therapeutic targets for human cancers. [provided by RefSeq, Apr 2014],