

KBTB4 Rabbit Polyclonal Antibody
KBTB4 Rabbit Polyclonal Antibody
Catalog # AP93461**Specification**

KBTB4 Rabbit Polyclonal Antibody - Product Information

Application	WB
Primary Accession	O9NVX7
Reactivity	Human, Mouse
Host	Polyclonal, Rabbit, IgG
Clonality	Polyclonal
Calculated MW	59904

KBTB4 Rabbit Polyclonal Antibody - Additional Information**Gene ID** 55709**Other Names**

Kelch repeat and BTB domain-containing protein 4, BTB and kelch domain-containing protein 4, KBTBD4, BKLHD4

Storage Conditions

-20°C

KBTB4 Rabbit Polyclonal Antibody - Protein Information**Name** KBTBD4**Synonyms** BKLHD4**Function**

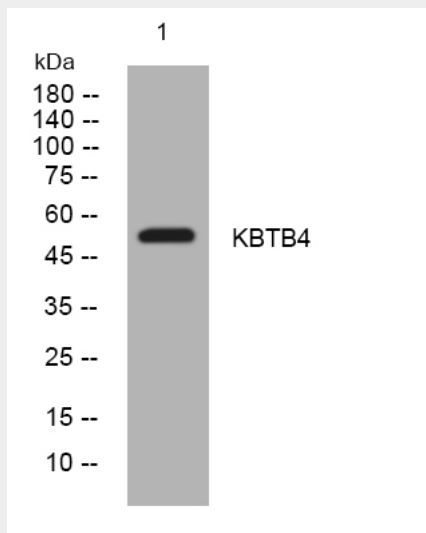
Substrate-specific adapter of a BCR (BTB-CUL3-RBX1) E3 ubiquitin ligase complex which targets CoREST corepressor complex components RCOR1, KDM1A/LSD1 and HDAC2 for proteasomal degradation (PubMed: [33417871](http://www.uniprot.org/citations/33417871)). RCOR1 is likely to be the primary target while degradation of KDM1A and HDAC2 is likely due to their association with RCOR1 (PubMed: [33417871](http://www.uniprot.org/citations/33417871)). Also targets RCOR3, MIER2 and MIER3 for proteasomal degradation as well as associated proteins ZNF217 and RREB1 (PubMed: [36997086](http://www.uniprot.org/citations/36997086)). Degradation is dependent on the presence of an ELM2 domain in the target proteins (PubMed: [36997086](http://www.uniprot.org/citations/36997086)).

KBTB4 Rabbit Polyclonal Antibody - Protocols

Provided below are standard protocols that you may find useful for product applications.

- [Western Blot](#)
- [Blocking Peptides](#)
- [Dot Blot](#)
- [Immunohistochemistry](#)
- [Immunofluorescence](#)
- [Immunoprecipitation](#)
- [Flow Cytometry](#)
- [Cell Culture](#)

KBTB4 Rabbit Polyclonal Antibody - Images



Western blot analysis of lysates from 3T3 cells, primary antibody was diluted at 1:1000, 4° over night