

PRAP1 Rabbit Polyclonal Antibody
PRAP1 Rabbit Polyclonal Antibody
Catalog # AP93455

Specification

PRAP1 Rabbit Polyclonal Antibody - Product Information

| | |
|-------------------|-------------------------|
| Application | WB |
| Primary Accession | O96NZ9 |
| Reactivity | Rat, Human, Mouse |
| Host | Polyclonal, Rabbit, IgG |
| Clonality | Polyclonal |
| Calculated MW | 17208 |

PRAP1 Rabbit Polyclonal Antibody - Additional Information

Gene ID 118471

Other Names

Proline-rich acidic protein 1, Epididymis tissue protein Li 178, Uterine-specific proline-rich acidic protein, PRAP1, UPA

Storage Conditions

-20°C

PRAP1 Rabbit Polyclonal Antibody - Protein Information

Name PRAP1

Synonyms UPA

Function

Lipid-binding protein which promotes lipid absorption by facilitating MTTP-mediated lipid transfer (mainly triglycerides and phospholipids) and MTTP-mediated apoB lipoprotein assembly and secretion (By similarity). Protects the gastrointestinal epithelium from irradiation-induced apoptosis (By similarity). May play an important role in maintaining normal growth homeostasis in epithelial cells (PubMed: [14583459](http://www.uniprot.org/citations/14583459)). Involved in p53/TP53-dependent cell survival after DNA damage (PubMed: [23235459](http://www.uniprot.org/citations/23235459)). May down-regulate the expression of MAD1L1 and exert a suppressive role in mitotic spindle assembly checkpoint in hepatocellular carcinomas (PubMed: [24374861](http://www.uniprot.org/citations/24374861)).

Cellular Location

Secreted. Endoplasmic reticulum {ECO:0000250|UniProtKB:Q80XD8}

Tissue Location

Highly expressed in the intestinal epithelial cells (at protein level) (PubMed:32629119). Abundantly expressed in the epithelial cells of the liver, kidney and cervix. Significantly down-regulated in

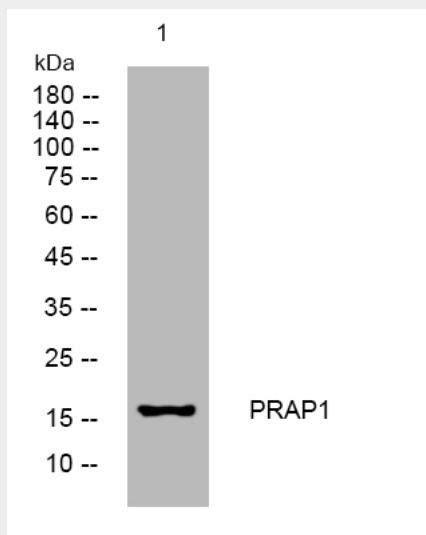
hepatocellular carcinoma and right colon adenocarcinoma compared with the respective adjacent normal tissues. Expressed in epididymis (at protein level).

PRAP1 Rabbit Polyclonal Antibody - Protocols

Provided below are standard protocols that you may find useful for product applications.

- [Western Blot](#)
- [Blocking Peptides](#)
- [Dot Blot](#)
- [Immunohistochemistry](#)
- [Immunofluorescence](#)
- [Immunoprecipitation](#)
- [Flow Cytometry](#)
- [Cell Culture](#)

PRAP1 Rabbit Polyclonal Antibody - Images



Western blot analysis of lysates from HpeG2 cells, primary antibody was diluted at 1:1000, 4°over night