

K0240 Rabbit Polyclonal Antibody
K0240 Rabbit Polyclonal Antibody
Catalog # AP93454**Specification**

K0240 Rabbit Polyclonal Antibody - Product Information

Application	WB
Primary Accession	Q6AI39
Reactivity	Human, Mouse
Host	Polyclonal, Rabbit, IgG
Clonality	Polyclonal
Calculated MW	115084

K0240 Rabbit Polyclonal Antibody - Additional Information**Gene ID** 23506**Other Names**

BRD4-interacting chromatin-remodeling complex-associated protein-like, Glioma tumor suppressor candidate region gene 1 protein-like {ECO:0000312|HGNC:HGNC:21111}, BICRAL (HGNC:21111)

Storage Conditions

-20°C

K0240 Rabbit Polyclonal Antibody - Protein Information**Name** BICRAL ([HGNC:21111](#))**Function**

Component of SWI/SNF chromatin remodeling subcomplex GBAF that carries out key enzymatic activities, changing chromatin structure by altering DNA-histone contacts within a nucleosome in an ATP- dependent manner.

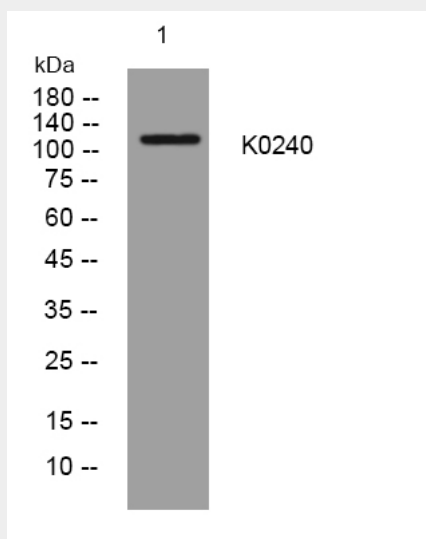
K0240 Rabbit Polyclonal Antibody - Protocols

Provided below are standard protocols that you may find useful for product applications.

- [Western Blot](#)
- [Blocking Peptides](#)
- [Dot Blot](#)
- [Immunohistochemistry](#)
- [Immunofluorescence](#)
- [Immunoprecipitation](#)
- [Flow Cytometry](#)

- [Cell Culture](#)

K0240 Rabbit Polyclonal Antibody - Images



Western blot analysis of lysates from SW480 cells, primary antibody was diluted at 1:1000, 4°over night