

**PRCC Rabbit Polyclonal Antibody**  
**PRCC Rabbit Polyclonal Antibody**  
Catalog # AP93453

## Specification

---

### PRCC Rabbit Polyclonal Antibody - Product Information

Application	WB
Primary Accession	<a href="#">O92733</a>
Reactivity	Rat, Human
Host	Polyclonal, Rabbit, IgG
Clonality	Polyclonal
Calculated MW	52418

### PRCC Rabbit Polyclonal Antibody - Additional Information

Gene ID 5546

#### Other Names

Proline-rich protein PRCC, Papillary renal cell carcinoma translocation-associated gene protein, PRCC, TPRC

#### Storage Conditions

-20°C

### PRCC Rabbit Polyclonal Antibody - Protein Information

**Name** PRCC

**Synonyms** TPRC

#### Function

May regulate cell cycle progression through interaction with MAD2L2.

#### Cellular Location

Nucleus.

#### Tissue Location

Ubiquitous in fetal and adult tissues.

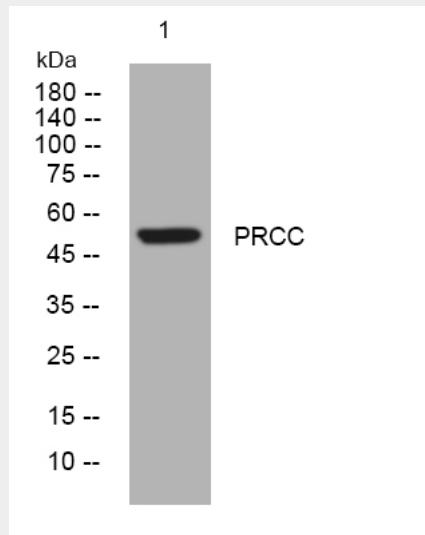
### PRCC Rabbit Polyclonal Antibody - Protocols

Provided below are standard protocols that you may find useful for product applications.

- [Western Blot](#)
- [Blocking Peptides](#)
- [Dot Blot](#)

- [Immunohistochemistry](#)
- [Immunofluorescence](#)
- [Immunoprecipitation](#)
- [Flow Cytometry](#)
- [Cell Culture](#)

### PRCC Rabbit Polyclonal Antibody - Images



Western blot analysis of lysates from MCF-7 cells, primary antibody was diluted at 1:1000, 4° over night

### PRCC Rabbit Polyclonal Antibody - Background

This gene encodes a protein that may play a role in pre-mRNA splicing. Chromosomal translocations (X;1)(p11;q21) that result in fusion of this gene to TFE3 (GeneID 7030) have been associated with papillary renal cell carcinoma. A PRCC-TFE3 fusion protein is expressed in affected carcinomas and is likely associated with altered gene transactivation. This fusion protein has also been associated with disruption of the cell cycle.[provided by RefSeq, Aug 2010],