

CALCOCO2 Rabbit Polyclonal Antibody
CALCOCO2 Rabbit Polyclonal Antibody
Catalog # AP93440**Specification**

CALCOCO2 Rabbit Polyclonal Antibody - Product Information

| | |
|-------------------|-------------------------|
| Application | WB |
| Primary Accession | O13137 |
| Reactivity | Rat, Human, Mouse |
| Host | Polyclonal, Rabbit, IgG |
| Clonality | Polyclonal |
| Calculated MW | 52254 |

CALCOCO2 Rabbit Polyclonal Antibody - Additional Information**Gene ID** 10241**Other Names**

Calcium-binding and coiled-coil domain-containing protein 2, Antigen nuclear dot 52 kDa protein, Nuclear domain 10 protein NDP52, Nuclear domain 10 protein 52, Nuclear dot protein 52, CALCOCO2, NDP52 {ECO:0000303|PubMed:7540613}

Storage Conditions

-20°C

CALCOCO2 Rabbit Polyclonal Antibody - Protein Information**Name** CALCOCO2**Synonyms** NDP52 {ECO:0000303|PubMed:7540613}**Function**

Xenophagy-specific receptor required for autophagy-mediated intracellular bacteria degradation. Acts as an effector protein of galectin-sensed membrane damage that restricts the proliferation of infecting pathogens such as Salmonella typhimurium upon entry into the cytosol by targeting LGALS8-associated bacteria for autophagy (PubMed: [22246324](http://www.uniprot.org/citations/22246324)). Initially orchestrates bacteria targeting to autophagosomes and subsequently ensures pathogen degradation by regulating pathogen-containing autophagosome maturation (PubMed: [23022382](http://www.uniprot.org/citations/23022382), PubMed: [25771791](http://www.uniprot.org/citations/25771791)). Bacteria targeting to autophagosomes relies on its interaction with MAP1LC3A, MAP1LC3B and/or GABARAPL2, whereas regulation of pathogen-containing autophagosome maturation requires the interaction with MAP3LC3C (PubMed: [23022382](http://www.uniprot.org/citations/23022382), PubMed: [25771791](http://www.uniprot.org/citations/25771791)). May play a role in ruffle formation and actin cytoskeleton organization and seems to negatively regulate constitutive secretion (PubMed: [17635994](http://www.uniprot.org/citations/17635994)).

Cellular Location

Cytoplasm, perinuclear region. Cytoplasm, cytoskeleton. Cytoplasmic vesicle, autophagosome membrane; Peripheral membrane protein. Note=According to PubMed:7540613, localizes to nuclear dots. According to PubMed:9230084 and PubMed:12869526, it is not a nuclear dot-associated protein but localizes predominantly in the cytoplasm with a coarse-grained distribution preferentially close to the nucleus.

Tissue Location

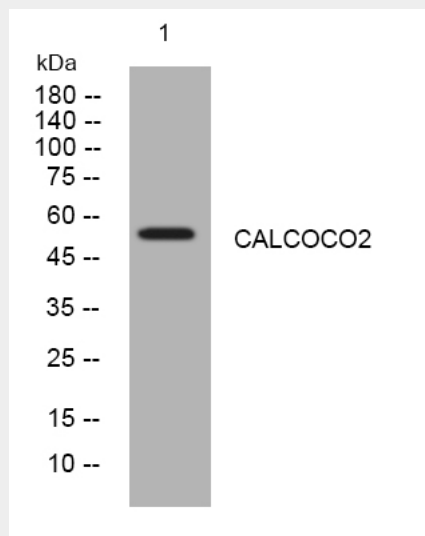
Expressed in all tissues tested with highest expression in skeletal muscle and lowest in brain

CALCOCO2 Rabbit Polyclonal Antibody - Protocols

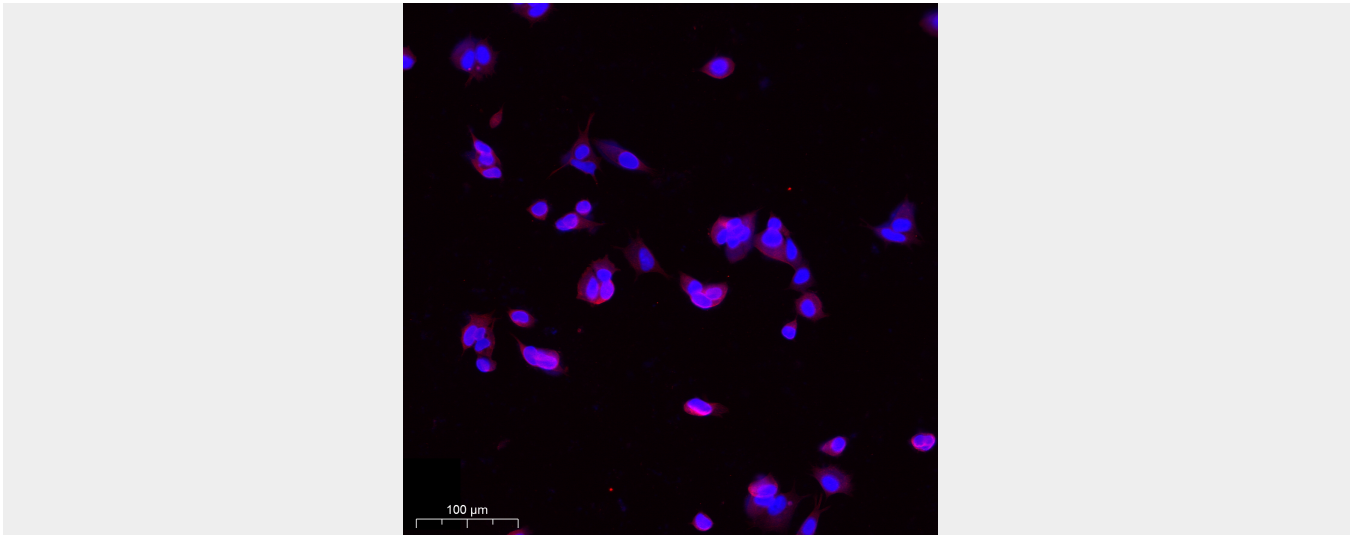
Provided below are standard protocols that you may find useful for product applications.

- [Western Blot](#)
- [Blocking Peptides](#)
- [Dot Blot](#)
- [Immunohistochemistry](#)
- [Immunofluorescence](#)
- [Immunoprecipitation](#)
- [Flow Cytometry](#)
- [Cell Culture](#)

CALCOCO2 Rabbit Polyclonal Antibody - Images



Western blot analysis of lysates from SW480 cells, primary antibody was diluted at 1:1000, 4°over night



Immunofluorescence analysis of MCF7 cell. 1,primary Antibody was diluted at 1:100(4°C overnight). 2, Goat Anti Rabbit IgG (H&L) - AFluor 594 Secondary antibody was diluted at 1:500(room temperature, 50min).

CALCOCO2 Rabbit Polyclonal Antibody - Background

This gene encodes a coiled-coil domain-containing protein. The encoded protein functions as a receptor for ubiquitin-coated bacteria and plays an important role in innate immunity by mediating macroautophagy. Alternatively spliced transcript variants encoding multiple isoforms have been observed for this gene. [provided by RefSeq, May 2012],