

KI3X1 Rabbit Polyclonal Antibody
KI3X1 Rabbit Polyclonal Antibody
Catalog # AP93438

Specification

KI3X1 Rabbit Polyclonal Antibody - Product Information

Application	WB
Primary Accession	O9H7L2
Reactivity	Rat, Human
Host	Polyclonal, Rabbit, IgG
Clonality	Polyclonal
Calculated MW	38777

KI3X1 Rabbit Polyclonal Antibody - Additional Information

Other Names

Putative killer cell immunoglobulin-like receptor-like protein KIR3DX1, Leukocyte receptor cluster member 12, KIR3DX1, KIR3DL0, LENG12

Storage Conditions

-20°C

KI3X1 Rabbit Polyclonal Antibody - Protein Information

Name KIR3DX1

Synonyms KIR3DL0, LENG12

Cellular Location

Secreted.

Tissue Location

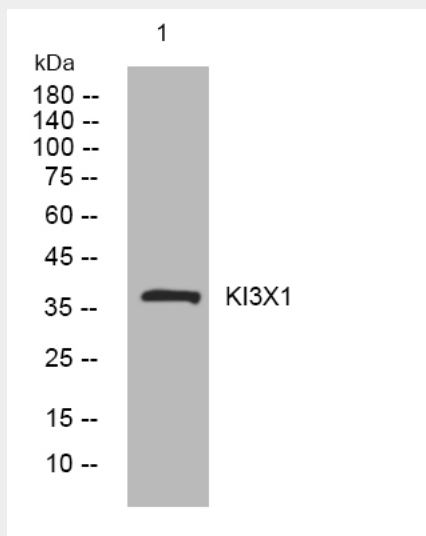
Expressed in NK-cells.

KI3X1 Rabbit Polyclonal Antibody - Protocols

Provided below are standard protocols that you may find useful for product applications.

- [Western Blot](#)
- [Blocking Peptides](#)
- [Dot Blot](#)
- [Immunohistochemistry](#)
- [Immunofluorescence](#)
- [Immunoprecipitation](#)
- [Flow Cytometry](#)
- [Cell Culture](#)

KI3X1 Rabbit Polyclonal Antibody - Images



Western blot analysis of lysates from SH-SY5Y cells, primary antibody was diluted at 1:1000, 4° over night