

PLEK2 Rabbit Polyclonal Antibody
PLEK2 Rabbit Polyclonal Antibody
Catalog # AP93437

Specification

PLEK2 Rabbit Polyclonal Antibody - Product Information

Application	WB
Primary Accession	Q9NYT0
Reactivity	Human, Mouse
Host	Polyclonal, Rabbit, IgG
Clonality	Polyclonal
Calculated MW	39971

PLEK2 Rabbit Polyclonal Antibody - Additional Information

Gene ID 26499

Other Names
Pleckstrin-2, PLEK2

Storage Conditions
-20°C

PLEK2 Rabbit Polyclonal Antibody - Protein Information

Name PLEK2

Function
May help orchestrate cytoskeletal arrangement. Contribute to lamellipodia formation.

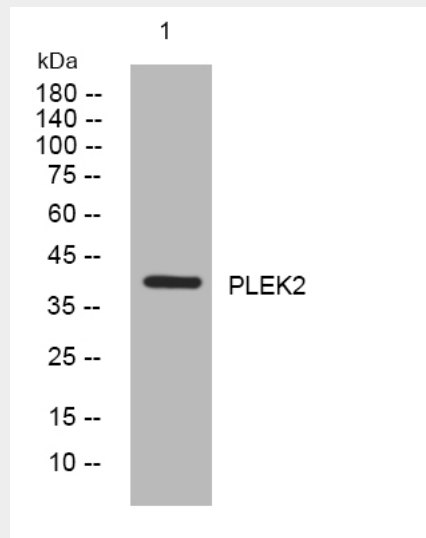
Cellular Location
Cell projection, lamellipodium membrane; Peripheral membrane protein. Cytoplasm, cytoskeleton

PLEK2 Rabbit Polyclonal Antibody - Protocols

Provided below are standard protocols that you may find useful for product applications.

- [Western Blot](#)
- [Blocking Peptides](#)
- [Dot Blot](#)
- [Immunohistochemistry](#)
- [Immunofluorescence](#)
- [Immunoprecipitation](#)
- [Flow Cytometry](#)
- [Cell Culture](#)

PLEK2 Rabbit Polyclonal Antibody - Images



Western blot analysis of lysates from MCF-7 cells, primary antibody was diluted at 1:1000, 4° over night

PLEK2 Rabbit Polyclonal Antibody - Background

The protein encoded by this gene associates with membrane-bound phosphatidylinositols generated by phosphatidylinositol 3-kinase. The encoded protein then interacts with the actin cytoskeleton to induce cell spreading. In conjunction with complement component 1, q subcomponent, B chain (C1QB), this gene shows an increase in expression in melanoma cells and may serve as an accurate biomarker for the disease. [provided by RefSeq, Dec 2015],