

**TMM8A Rabbit Polyclonal Antibody**  
**TMM8A Rabbit Polyclonal Antibody**  
Catalog # AP93399**Specification****TMM8A Rabbit Polyclonal Antibody - Product Information**

Application	WB
Primary Accession	<a href="#">O9HCN3</a>
Reactivity	Human, Mouse
Host	Polyclonal, Rabbit, IgG
Clonality	Polyclonal
Calculated MW	84761

**TMM8A Rabbit Polyclonal Antibody - Additional Information**

Gene ID 58986

**Other Names**

Post-GPI attachment to proteins factor 6, 3.1.1.4, GPI processing phospholipase A2, GPI-PLA2, Protein M83, Transmembrane protein 6, Transmembrane protein 8, Transmembrane protein 8A, PGAP6 {ECO:0000303|PubMed:27881714, ECO:0000312|HGNC:HGNC:17205}

**Storage Conditions**

-20°C

**TMM8A Rabbit Polyclonal Antibody - Protein Information****Name** PGAP6 {ECO:0000303|PubMed:27881714, ECO:0000312|HGNC:HGNC:17205}**Function**

Involved in the lipid remodeling steps of GPI-anchor maturation. Lipid remodeling steps consist in the generation of 2 saturated fatty chains at the sn-2 position of GPI-anchor proteins (GPI-AP). Has phospholipase A2 activity that removes an acyl-chain at the sn-2 position of GPI-anchors during the remodeling of GPI. Required for the shedding of the GPI-AP CRIPTO, but not CFC1, at the cell surface. Shedding of CRIPTO modulates Nodal signaling by allowing soluble CRIPTO to act as a Nodal coreceptor on other cells (PubMed:<a href="http://www.uniprot.org/citations/27881714" target="\_blank">27881714</a>). Also indirectly involved in the translocation of RAC1 from the cytosol to the plasma membrane by maintaining the steady state amount of CAV1-enriched plasma membrane subdomains, stabilizing RAC1 at the plasma membrane (PubMed:<a href="http://www.uniprot.org/citations/27835684" target="\_blank">27835684</a>). In contrast to myomaker (TMEM8C), has no fusogenic activity (PubMed:<a href="http://www.uniprot.org/citations/26858401" target="\_blank">26858401</a>).

**Cellular Location**

Cell membrane; Multi-pass membrane protein. Lysosome membrane; Multi-pass membrane protein

**Tissue Location**

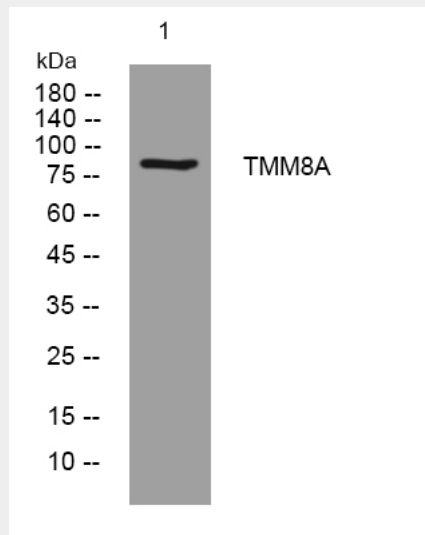
Expressed in pancreas, placenta, spleen, liver, kidney, bone marrow, peripheral blood leukocytes and tonsil

### TMM8A Rabbit Polyclonal Antibody - Protocols

Provided below are standard protocols that you may find useful for product applications.

- [Western Blot](#)
- [Blocking Peptides](#)
- [Dot Blot](#)
- [Immunohistochemistry](#)
- [Immunofluorescence](#)
- [Immunoprecipitation](#)
- [Flow Cytometry](#)
- [Cell Culture](#)

### TMM8A Rabbit Polyclonal Antibody - Images



Western blot analysis of lysates from MCF-7 cells, primary antibody was diluted at 1:1000, 4° over night