

GPHRB Rabbit Polyclonal Antibody
GPHRB Rabbit Polyclonal Antibody
Catalog # AP93393

Specification

GPHRB Rabbit Polyclonal Antibody - Product Information

| | |
|-------------------|-------------------------|
| Application | WB |
| Primary Accession | POCG08 |
| Reactivity | Rat, Human |
| Host | Polyclonal, Rabbit, IgG |
| Clonality | Polyclonal |
| Calculated MW | 52917 |

GPHRB Rabbit Polyclonal Antibody - Additional Information

Gene ID 51463;653519

Other Names

Golgi pH regulator B, Protein GPR89B, GPR89B (http://www.genenames.org/cgi-bin/gene_symbol_report?hgnc_id=13840 target="_blank">HGNC:13840)

Storage Conditions

-20°C

GPHRB Rabbit Polyclonal Antibody - Protein Information

Name GPR89B ([HGNC:13840](#))

Function

Voltage-gated channel that enables the transfer of anions such as iodide, chloride, bromide and fluoride which may function in counter-ion conductance and participates in Golgi acidification (PubMed:<http://www.uniprot.org/citations/18794847>). Plays a role in lymphocyte development, probably by acting as a RABL3 effector in hematopoietic cells (By similarity).

Cellular Location

Golgi apparatus membrane; Multi-pass membrane protein

Tissue Location

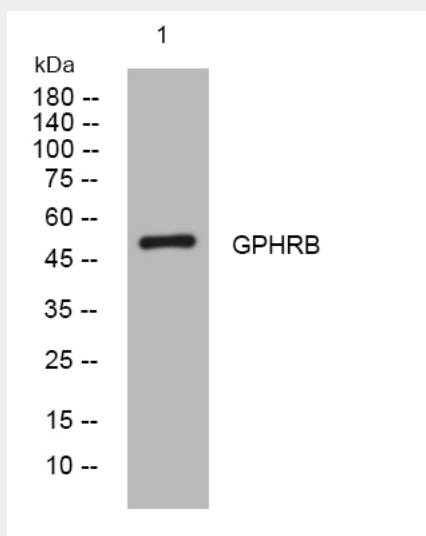
Ubiquitous..

GPHRB Rabbit Polyclonal Antibody - Protocols

Provided below are standard protocols that you may find useful for product applications.

- [Western Blot](#)
- [Blocking Peptides](#)
- [Dot Blot](#)
- [Immunohistochemistry](#)
- [Immunofluorescence](#)
- [Immunoprecipitation](#)
- [Flow Cytometry](#)
- [Cell Culture](#)

GPHRB Rabbit Polyclonal Antibody - Images



Western blot analysis of lysates from SH-SY5Y cells, primary antibody was diluted at 1:1000, 4°over night