

**DB118 Rabbit Polyclonal Antibody**  
**DB118 Rabbit Polyclonal Antibody**  
**Catalog # AP93384****Specification**

---

**DB118 Rabbit Polyclonal Antibody - Product Information**

Application	<b>WB</b>
Primary Accession	<a href="#">O96PH6</a>
Reactivity	<b>Rat, Human</b>
Host	<b>Polyclonal, Rabbit, IgG</b>
Clonality	<b>Polyclonal</b>
Calculated MW	<b>13614</b>

**DB118 Rabbit Polyclonal Antibody - Additional Information****Gene ID** 117285**Other Names**

Defensin beta 118 {ECO:0000312|HGNC:HGNC:16196}, Beta-defensin 18, DEFB-18, Epididymal secretory protein 13.6, ESP13.6, DEFB118, C20orf63, DEFB18, ESC42

**Storage Conditions**

-20°C

**DB118 Rabbit Polyclonal Antibody - Protein Information****Name** DEFB118**Synonyms** C20orf63, DEFB18, ESC42**Function**

Host defense peptide that exhibits antimicrobial activity against both Gram-negative bacteria, such as E.coli and S.typhimurium, and Gram-positive bacteria, such as S.aureus and B.subtilis (PubMed:<a href="http://www.uniprot.org/citations/15033915" target="\_blank">15033915</a>, PubMed:<a href="http://www.uniprot.org/citations/33224970" target="\_blank">33224970</a>). Inhibits cell adhesion of E.coli on intestinal epithelial enterocytes (PubMed:<a href="http://www.uniprot.org/citations/33224970" target="\_blank">33224970</a>). Causes rapid permeabilization of both the outer and inner membrane of E.coli, leading to morphological alterations on the bacterial surface (PubMed:<a href="http://www.uniprot.org/citations/15033915" target="\_blank">15033915</a>). Binds to bacterial lipopolysaccharides (LPS) with high affinity, and may thereby be involved in immunoregulation through LPS neutralization (PubMed:<a href="http://www.uniprot.org/citations/33181266" target="\_blank">33181266</a>). May contribute to epididymal innate immunity and protect the sperm against attack by microorganisms (PubMed:<a href="http://www.uniprot.org/citations/15033915" target="\_blank">15033915</a>).

**Cellular Location**

Secreted.

### Tissue Location

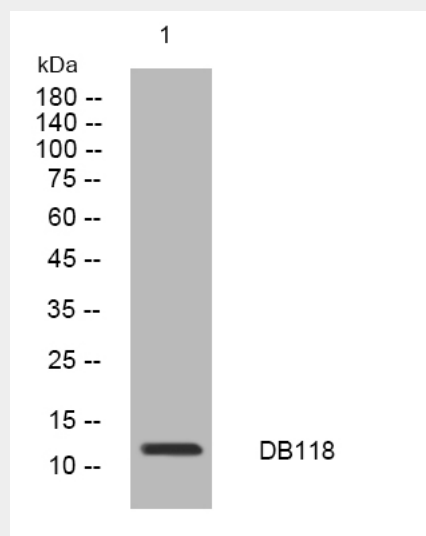
High-level and epididymis-specific expression (PubMed:12600824). Most abundant in the epithelium of the caput and present in the epididymis lumen and bound to sperm (PubMed:12600824) Also expressed in pancreas (PubMed:12600824)

### DB118 Rabbit Polyclonal Antibody - Protocols

Provided below are standard protocols that you may find useful for product applications.

- [Western Blot](#)
- [Blocking Peptides](#)
- [Dot Blot](#)
- [Immunohistochemistry](#)
- [Immunofluorescence](#)
- [Immunoprecipitation](#)
- [Flow Cytometry](#)
- [Cell Culture](#)

### DB118 Rabbit Polyclonal Antibody - Images



Western blot analysis of lysates from HCT116 cells, primary antibody was diluted at 1:1000, 4°over night

### DB118 Rabbit Polyclonal Antibody - Background

This gene encodes a member of the beta subfamily of defensins. Beta-defensins are antimicrobial peptides that protect tissues and organs from infection by a variety of microorganisms. Expression of this gene is regulated by androgen, and the encoded protein binds to sperm and exhibits antibacterial activity against E. coli. This gene is found in a cluster with other beta-defensin genes on the long arm of chromosome 20. [provided by RefSeq, Nov 2014],