

**B4GN4 Rabbit Polyclonal Antibody**  
**B4GN4 Rabbit Polyclonal Antibody**  
Catalog # AP93383**Specification**

---

**B4GN4 Rabbit Polyclonal Antibody - Product Information**

Application	WB
Primary Accession	<a href="#">Q76KP1</a>
Reactivity	Human, Mouse
Host	Polyclonal, Rabbit, IgG
Clonality	Polyclonal
Calculated MW	116513

**B4GN4 Rabbit Polyclonal Antibody - Additional Information**

Gene ID 338707

**Other Names**

N-acetyl-beta-glucosaminyl-glycoprotein 4-beta-N-acetylgalactosaminyltransferase 1, NGalNAc-T1, 2.4.1.244, Beta-1, 4-N-acetylgalactosaminyltransferase IV, Beta4GalNAc-T4, Beta4GalNAcT4, B4GALNT4

**Storage Conditions**

-20°C

**B4GN4 Rabbit Polyclonal Antibody - Protein Information**

Name B4GALNT4

**Function**

Transfers N-acetylgalactosamine (GalNAc) from UDP-GalNAc to N-acetylglucosamine-beta-benzyl with a beta-1,4-linkage to form N,N'- diacetyllactosamine, GalNAc-beta-1,4-GlcNAc structures in N-linked glycans and probably O-linked glycans.

**Cellular Location**

Golgi apparatus, Golgi stack membrane; Single-pass type II membrane protein

**Tissue Location**

Highly expressed in ovary, adult and fetal brain. Also expressed in fetal kidney and lung.

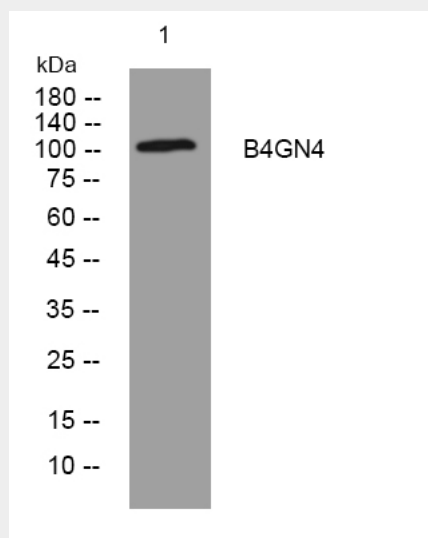
**B4GN4 Rabbit Polyclonal Antibody - Protocols**

Provided below are standard protocols that you may find useful for product applications.

- [Western Blot](#)
- [Blocking Peptides](#)

- [Dot Blot](#)
- [Immunohistochemistry](#)
- [Immunofluorescence](#)
- [Immunoprecipitation](#)
- [Flow Cytometry](#)
- [Cell Culture](#)

### B4GN4 Rabbit Polyclonal Antibody - Images



Western blot analysis of lysates from 3T3 cells, primary antibody was diluted at 1:1000, 4° over night