

**LCE3E Rabbit Polyclonal Antibody**  
**LCE3E Rabbit Polyclonal Antibody**  
**Catalog # AP93381**

## Specification

---

### LCE3E Rabbit Polyclonal Antibody - Product Information

Application	IHC, IF
Primary Accession	<a href="#">Q5T5B0</a>
Reactivity	Rat, Human
Host	Polyclonal, Rabbit, IgG
Clonality	Polyclonal
Calculated MW	9507

### LCE3E Rabbit Polyclonal Antibody - Additional Information

**Gene ID** 353145

#### Other Names

Late cornified envelope protein 3E, Late envelope protein 17, LCE3E, LEP17

#### Storage Conditions

-20°C

### LCE3E Rabbit Polyclonal Antibody - Protein Information

**Name** LCE3E

**Synonyms** LEP17

#### Function

Precursors of the cornified envelope of the stratum corneum.

#### Tissue Location

Skin-specific. Expression was readily detected in adult trunk skin, adult arm skin, fetal skin, penal skin, vulva, esophagus and tongue. Not expressed in the cervix, rectum, lung, colon, or placenta.

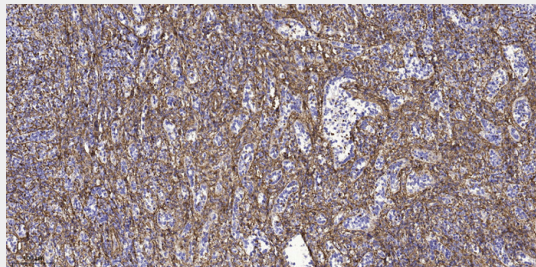
### LCE3E Rabbit Polyclonal Antibody - Protocols

Provided below are standard protocols that you may find useful for product applications.

- [Western Blot](#)
- [Blocking Peptides](#)
- [Dot Blot](#)
- [Immunohistochemistry](#)
- [Immunofluorescence](#)
- [Immunoprecipitation](#)

- [Flow Cytometry](#)
- [Cell Culture](#)

#### **LCE3E Rabbit Polyclonal Antibody - Images**



Immunohistochemical analysis of paraffin-embedded human spleen tissue. 1,primary Antibody was diluted at 1:200(4° overnight). 2, Sodium citrate pH 6.0 was used for antigen retrieval(>98°C,20min). 3,Secondary antibody was diluted at 1:200