

**BCL3 Antibody (Center)**  
**Affinity Purified Rabbit Polyclonal Antibody (Pab)**  
**Catalog # AP9337C**

**Specification**

---

**BCL3 Antibody (Center) - Product Information**

Application	IHC-P, FC,E
Primary Accession	<a href="#">P20749</a>
Other Accession	<a href="#">O9Z2F6</a>
Reactivity	Human, Mouse
Host	Rabbit
Clonality	Polyclonal
Isotype	Rabbit IgG
Antigen Region	249-277

**BCL3 Antibody (Center) - Additional Information**

**Gene ID** 602

**Other Names**

B-cell lymphoma 3 protein, BCL-3, Proto-oncogene BCL3, BCL3, BCL4, D19S37

**Target/Specificity**

This BCL3 antibody is generated from rabbits immunized with a KLH conjugated synthetic peptide between 249-277 amino acids from the Central region of human BCL3.

**Dilution**

IHC-P~~1:10~50

FC~~1:10~50

**Format**

Purified polyclonal antibody supplied in PBS with 0.09% (W/V) sodium azide. This antibody is purified through a protein A column, followed by peptide affinity purification.

**Storage**

Maintain refrigerated at 2-8°C for up to 2 weeks. For long term storage store at -20°C in small aliquots to prevent freeze-thaw cycles.

**Precautions**

BCL3 Antibody (Center) is for research use only and not for use in diagnostic or therapeutic procedures.

**BCL3 Antibody (Center) - Protein Information**

**Name** BCL3

**Synonyms** BCL4, D19S37

**Function** Contributes to the regulation of transcriptional activation of NF-kappa-B target genes. In the cytoplasm, inhibits the nuclear translocation of the NF-kappa-B p50 subunit. In the nucleus, acts as transcriptional activator that promotes transcription of NF-kappa-B target genes. Contributes to the regulation of cell proliferation (By similarity).

#### **Cellular Location**

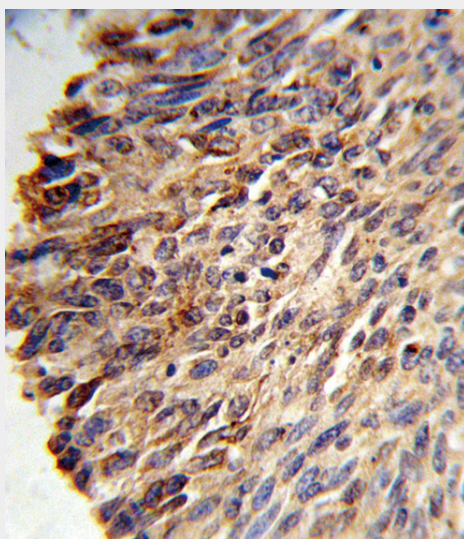
Nucleus. Cytoplasm. Cytoplasm, perinuclear region. Note=Ubiquitination via 'Lys-63'- linked ubiquitin chains is required for nuclear accumulation

#### **BCL3 Antibody (Center) - Protocols**

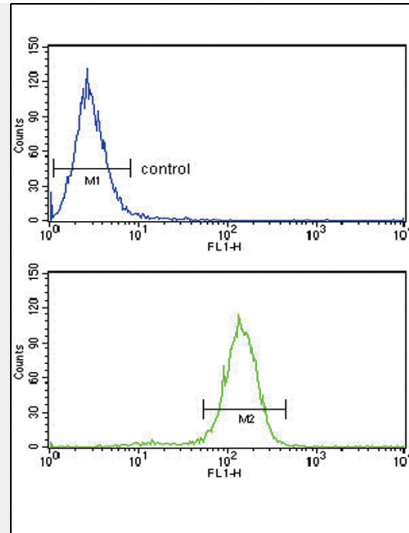
Provided below are standard protocols that you may find useful for product applications.

- [Western Blot](#)
- [Blocking Peptides](#)
- [Dot Blot](#)
- [Immunohistochemistry](#)
- [Immunofluorescence](#)
- [Immunoprecipitation](#)
- [Flow Cytometry](#)
- [Cell Culture](#)

#### **BCL3 Antibody (Center) - Images**



Formalin-fixed and paraffin-embedded human lung carcinoma reacted with BCL3 Antibody (Center), which was peroxidase-conjugated to the secondary antibody, followed by DAB staining. This data demonstrates the use of this antibody for immunohistochemistry; clinical relevance has not been evaluated.



BCL3 Antibody (Center) (Cat. #AP9337c) flow cytometry analysis of HeLa cells (bottom histogram) compared to a negative control cell (top histogram). FITC-conjugated goat-anti-rabbit secondary antibodies were used for the analysis.

#### **BCL3 Antibody (Center) - Background**

BCL3 is a proto-oncogene candidate. It is identified by its translocation into the immunoglobulin alpha-locus in some cases of B-cell leukemia. The protein contains seven ankyrin repeats, which are most closely related to those found in I kappa B proteins. This protein functions as a transcriptional co-activator that activates through its association with NF-kappa B homodimers.

#### **BCL3 Antibody (Center) - References**

Kabuta, T. et al., *Biochem. Biophys. Res. Commun.* 394 (3), 697-702 (2010)  
Talmud, P.J. et al., *Am. J. Hum. Genet.* 85 (5), 628-642 (2009)  
Folco, E.J. et al., *J. Biol. Chem.* 284 (38), 25569-25575 (2009)

#### **BCL3 Antibody (Center) - Citations**

- [Hepatic B cell leukemia-3 promotes hepatic steatosis and inflammation through insulin-sensitive metabolic transcription factors.](#)