

KR511 Rabbit Polyclonal Antibody
KR511 Rabbit Polyclonal Antibody
Catalog # AP93371**Specification**

KR511 Rabbit Polyclonal Antibody - Product Information

Application	WB
Primary Accession	Q6L8G4
Reactivity	Rat, Human
Host	Polyclonal, Rabbit, IgG
Clonality	Polyclonal
Calculated MW	14610

KR511 Rabbit Polyclonal Antibody - Additional Information**Gene ID** 440051**Other Names**

Keratin-associated protein 5-11, Keratin-associated protein 5.11, Ultrahigh sulfur keratin-associated protein 5.11, KRTAP5-11, KAP5.11, KRTAP5.11

Storage Conditions

-20°C

KR511 Rabbit Polyclonal Antibody - Protein Information**Name** KRTAP5-11**Synonyms** KAP5.11, KRTAP5.11**Function**

In the hair cortex, hair keratin intermediate filaments are embedded in an interfilamentous matrix, consisting of hair keratin-associated protein (KRTAP), which are essential for the formation of a rigid and resistant hair shaft through their extensive disulfide bond cross-linking with abundant cysteine residues of hair keratins. The matrix proteins include the high-sulfur and high-glycine-tyrosine keratins.

Tissue Location

Restricted to hair root, not detected in any other tissues.

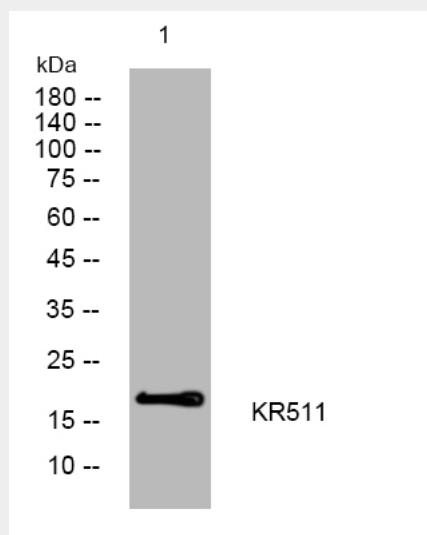
KR511 Rabbit Polyclonal Antibody - Protocols

Provided below are standard protocols that you may find useful for product applications.

- [Western Blot](#)
- [Blocking Peptides](#)

- [Dot Blot](#)
- [Immunohistochemistry](#)
- [Immunofluorescence](#)
- [Immunoprecipitation](#)
- [Flow Cytometry](#)
- [Cell Culture](#)

KR511 Rabbit Polyclonal Antibody - Images



Western blot analysis of lysates from AD293 cells, primary antibody was diluted at 1:1000, 4° over night