

S100 A8+A9 (11C12) Mouse Monoclonal Antibody
S100 A8+A9 (11C12) Mouse Monoclonal Antibody
Catalog # AP93361

Specification

S100 A8+A9 (11C12) Mouse Monoclonal Antibody - Product Information

| | |
|-------------------|-------------------------------|
| Application | IHC |
| Primary Accession | P05109/P06702 |
| Reactivity | Human |
| Host | Monoclonal, Mouse |
| Clonality | Monoclonal |

S100 A8+A9 (11C12) Mouse Monoclonal Antibody - Additional Information

Storage Conditions
-20°C

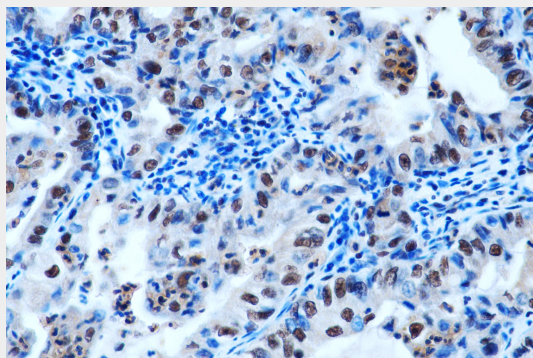
S100 A8+A9 (11C12) Mouse Monoclonal Antibody - Protein Information

S100 A8+A9 (11C12) Mouse Monoclonal Antibody - Protocols

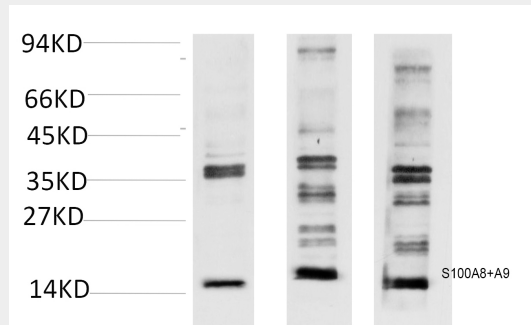
Provided below are standard protocols that you may find useful for product applications.

- [Western Blot](#)
- [Blocking Peptides](#)
- [Dot Blot](#)
- [Immunohistochemistry](#)
- [Immunofluorescence](#)
- [Immunoprecipitation](#)
- [Flow Cytometry](#)
- [Cell Culture](#)

S100 A8+A9 (11C12) Mouse Monoclonal Antibody - Images



Immunohistochemical analysis of paraffin-embedded Human Lung Carcinoma Tissue using S100A8+A9 Complex Mouse mAb diluted at 1:200.



Western blot analysis of A) A549 Cell, B) Mouse Spleen Tissue, 3) Rat Lung Tissue Lysate using S100A8+A9 Complex Mouse mAb diluted at 1:2,000.

S100 A8+A9 (11C12) Mouse Monoclonal Antibody - Background

S100 proteins are localized in the cytoplasm and/or nucleus of a wide range of cells, and involved in the regulation of a number of cellular processes such as cell cycle progression and differentiation. S100 calcium binding protein A8,A9 (S100A8,A9 Complex) Homo sapiens The protein encoded by this gene is a member of the S100 family of proteins containing 2 EF-hand calcium-binding motifs.