

KRA94 Rabbit Polyclonal Antibody
KRA94 Rabbit Polyclonal Antibody
Catalog # AP93355**Specification**

KRA94 Rabbit Polyclonal Antibody - Product Information

Application	WB
Primary Accession	Q9BYQ2
Reactivity	Rat, Human
Host	Polyclonal, Rabbit, IgG
Clonality	Polyclonal
Calculated MW	16378

KRA94 Rabbit Polyclonal Antibody - Additional Information**Gene ID** 85280**Other Names**

Keratin-associated protein 9-4, Keratin-associated protein 9.4, Ultrahigh sulfur keratin-associated protein 9.4, KRTAP9-4, KAP9.4, KRTAP9.4

Storage Conditions

-20°C

KRA94 Rabbit Polyclonal Antibody - Protein Information**Name** KRTAP9-4**Synonyms** KAP9.4, KRTAP9.4**Function**

In the hair cortex, hair keratin intermediate filaments are embedded in an interfilamentous matrix, consisting of hair keratin-associated proteins (KRTAP), which are essential for the formation of a rigid and resistant hair shaft through their extensive disulfide bond cross-linking with abundant cysteine residues of hair keratins. The matrix proteins include the high-sulfur and high-glycine-tyrosine keratins.

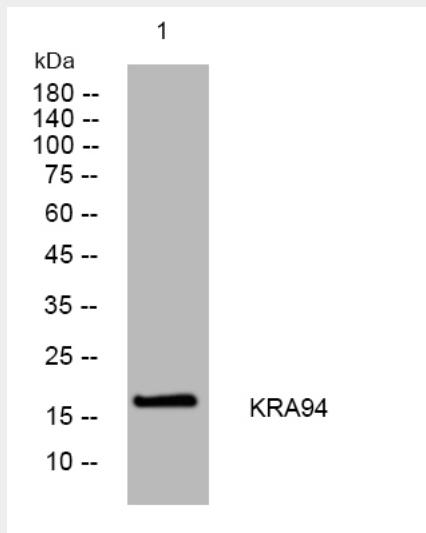
KRA94 Rabbit Polyclonal Antibody - Protocols

Provided below are standard protocols that you may find useful for product applications.

- [Western Blot](#)
- [Blocking Peptides](#)
- [Dot Blot](#)
- [Immunohistochemistry](#)
- [Immunofluorescence](#)

- [Immunoprecipitation](#)
- [Flow Cytometry](#)
- [Cell Culture](#)

KRA94 Rabbit Polyclonal Antibody - Images



Western blot analysis of lysates from 293T cells, primary antibody was diluted at 1:1000, 4° over night

KRA94 Rabbit Polyclonal Antibody - Background

This protein is a member of the keratin-associated protein (KAP) family. The KAP proteins form a matrix of keratin intermediate filaments which contribute to the structure of hair fibers. KAP family members appear to have unique, family-specific amino- and carboxyl-terminal regions and are subdivided into three multi-gene families according to amino acid composition: the high sulfur, the ultrahigh sulfur, and the high tyrosine/glycine KAPs. This protein is a member of the ultrahigh sulfur KAP family and the gene is localized to a cluster of KAPs at 17q12-q21. [provided by RefSeq, Jul 2008],