

CE025 Rabbit Polyclonal Antibody
CE025 Rabbit Polyclonal Antibody
Catalog # AP93352**Specification**

CE025 Rabbit Polyclonal Antibody - Product Information

Application	WB
Primary Accession	Q8NDZ2
Reactivity	Rat, Human
Host	Polyclonal, Rabbit, IgG
Clonality	Polyclonal
Calculated MW	96838

CE025 Rabbit Polyclonal Antibody - Additional Information**Gene ID** 375484**Other Names**

SUMO-interacting motif-containing protein 1, Platform element for inhibition of autolytic degradation, SIMC1, C5orf25, PLEIAD {ECO:0000303|PubMed:23707407}

Storage Conditions

-20°C

CE025 Rabbit Polyclonal Antibody - Protein Information**Name** SIMC1**Synonyms** C5orf25, PLEIAD {ECO:0000303|PubMed:2370}**Function**

Plays a role in SMC5-SMC6 complex recruitment for viral restriction. Forms a complex with SLF2 and this complex is required to recruit SMC5-SMC6 complex to PML nuclear bodies and sites of viral replication.

Cellular Location

Nucleus, PML body.

Tissue Location

[Isoform 5]: Skeletal muscle.

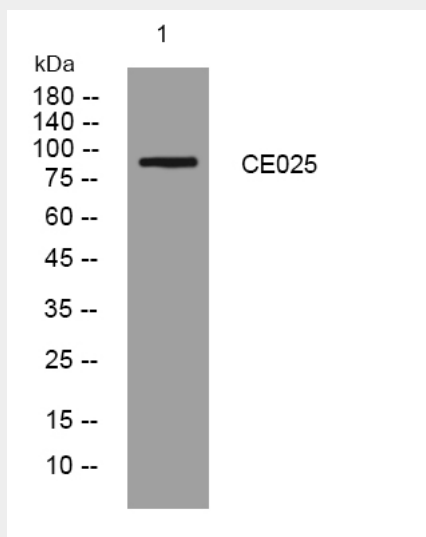
CE025 Rabbit Polyclonal Antibody - Protocols

Provided below are standard protocols that you may find useful for product applications.

- [Western Blot](#)

- [Blocking Peptides](#)
- [Dot Blot](#)
- [Immunohistochemistry](#)
- [Immunofluorescence](#)
- [Immunoprecipitation](#)
- [Flow Cytometry](#)
- [Cell Culture](#)

CE025 Rabbit Polyclonal Antibody - Images



Western blot analysis of lysates from 3T3 cells, primary antibody was diluted at 1:1000, 4° over night