

S6OS1 Rabbit Polyclonal Antibody
S6OS1 Rabbit Polyclonal Antibody
Catalog # AP93347**Specification**

S6OS1 Rabbit Polyclonal Antibody - Product Information

Application	WB
Primary Accession	Q8N1H7
Reactivity	Human, Mouse
Host	Polyclonal, Rabbit, IgG
Clonality	Polyclonal
Calculated MW	68166

S6OS1 Rabbit Polyclonal Antibody - Additional Information**Gene ID** 317761**Other Names**

Protein SIX6OS1, Six6 opposite strand transcript 1 {ECO:0000312|HGNC:HGNC:19849}, SIX6OS1 (http://www.genenames.org/cgi-bin/gene_symbol_report?hgnc_id=19849) HGNC:19849, C14orf39

Storage Conditions

-20°C

S6OS1 Rabbit Polyclonal Antibody - Protein Information**Name** SIX6OS1 ([HGNC:19849](#))**Synonyms** C14orf39**Function**

Meiotic protein that localizes to the central element of the synaptonemal complex and is required for chromosome synapsis during meiotic recombination. Required for the appropriate processing of intermediate recombination nodules before crossover formation.

Cellular Location

Chromosome {ECO:0000250|UniProtKB:Q9CTN5}. Note=Component of the central element of the synaptonemal complex. In spermatocytes, detected from zygonema to pachynema and localizes along synapsed lateral elements. Loading to the central element of the synaptonemal complex is dependent on the assembly of the tripartite synaptonemal complex structure that occurs upon synapsis between homologous chromosomes. {ECO:0000250|UniProtKB:Q9CTN5}

Tissue Location

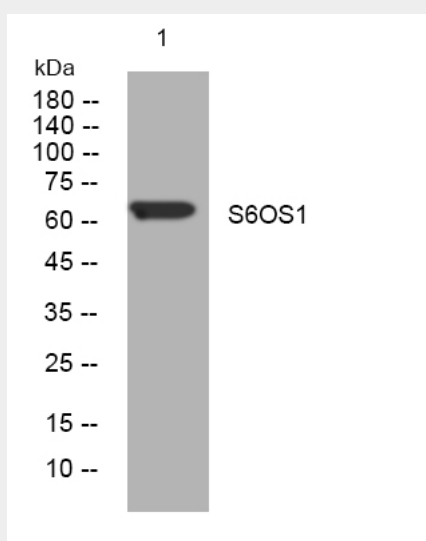
Highest expression in retina, skeletal muscle, testis and colon.

S6OS1 Rabbit Polyclonal Antibody - Protocols

Provided below are standard protocols that you may find useful for product applications.

- [Western Blot](#)
- [Blocking Peptides](#)
- [Dot Blot](#)
- [Immunohistochemistry](#)
- [Immunofluorescence](#)
- [Immunoprecipitation](#)
- [Flow Cytometry](#)
- [Cell Culture](#)

S6OS1 Rabbit Polyclonal Antibody - Images



Western blot analysis of lysates from SH-SY5Y cells, primary antibody was diluted at 1:1000, 4° over night