

**NUD11 Rabbit Polyclonal Antibody**  
**NUD11 Rabbit Polyclonal Antibody**  
Catalog # AP93345**Specification**

---

**NUD11 Rabbit Polyclonal Antibody - Product Information**

Application	WB
Primary Accession	<a href="#">O96G61</a>
Reactivity	Human, Mouse
Host	Polyclonal, Rabbit, IgG
Clonality	Polyclonal
Calculated MW	18559

**NUD11 Rabbit Polyclonal Antibody - Additional Information****Gene ID** 55190**Other Names**

Diphosphoinositol polyphosphate phosphohydrolase 3-beta, DIPP-3-beta, DIPP3-beta, hDIPP3beta, 3.6.1.52, Diadenosine 5', 5'''-P1, P6-hexaphosphate hydrolase 3-beta, Diadenosine hexaphosphate hydrolase (AMP-forming), 3.6.1.60, Nucleoside diphosphate-linked moiety X motif 11, Nudix motif 11, hAps1, NUDT11 ([target="\\_blank">HGNC:18011](http://www.genenames.org/cgi-bin/gene_symbol_report?hgnc_id=18011)), APS1, DIPP3B

**Storage Conditions**

-20°C

**NUD11 Rabbit Polyclonal Antibody - Protein Information****Name** NUDT11 ([HGNC:18011](#))**Synonyms** APS1, DIPP3B**Function**

Cleaves a beta-phosphate from the diphosphate groups in PP- InsP5 (diphosphoinositol pentakisphosphate), suggesting that it may play a role in signal transduction. Also able to catalyze the hydrolysis of dinucleoside oligophosphates, with Ap6A and Ap5A being the preferred substrates. The major reaction products are ADP and p4a from Ap6A and ADP and ATP from Ap5A. Also able to hydrolyze 5- phosphoribose 1-diphosphate.

**Cellular Location**

Cytoplasm.

**Tissue Location**

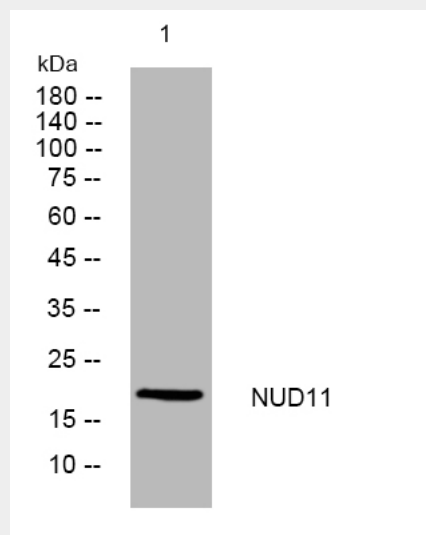
Mainly expressed in testis and, at lower level in brain. According to PubMed:12121577, it is also expressed in pancreas and weakly expressed in thymus, prostate, ovary, lung, small intestine and heart.

## NUD11 Rabbit Polyclonal Antibody - Protocols

Provided below are standard protocols that you may find useful for product applications.

- [Western Blot](#)
- [Blocking Peptides](#)
- [Dot Blot](#)
- [Immunohistochemistry](#)
- [Immunofluorescence](#)
- [Immunoprecipitation](#)
- [Flow Cytometry](#)
- [Cell Culture](#)

## NUD11 Rabbit Polyclonal Antibody - Images



Western blot analysis of lysates from MCF-7 cells, primary antibody was diluted at 1:1000, 4° over night

## NUD11 Rabbit Polyclonal Antibody - Background

NUD11 belongs to a subgroup of phosphohydrolases that preferentially attack diphosphoinositol polyphosphates (Hidaka et al., 2002 [PubMed 12105228]). [supplied by OMIM, Mar 2008],