

CT203 Rabbit Polyclonal Antibody
CT203 Rabbit Polyclonal Antibody
Catalog # AP93327**Specification**

CT203 Rabbit Polyclonal Antibody - Product Information

Application	WB
Primary Accession	Q8NBC4
Reactivity	Rat, Human
Host	Polyclonal, Rabbit, IgG
Clonality	Polyclonal
Calculated MW	21159

CT203 Rabbit Polyclonal Antibody - Additional Information**Gene ID** 284805**Other Names**

Uncharacterized protein C20orf203, C20orf203

Storage Conditions

-20°C

CT203 Rabbit Polyclonal Antibody - Protein Information**Name** C20orf203**Cellular Location**

Cytoplasm.

Tissue Location

Expressed most abundantly in the brain at protein level. Present in cortex, cerebellum and midbrain. Found in neurons Elevated expressions detected in Alzheimer brain samples. Also expressed in testis.

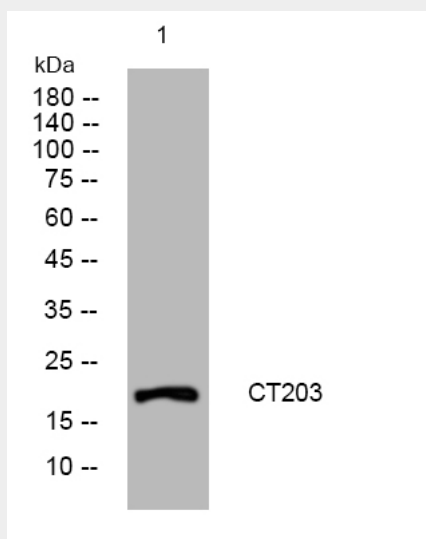
CT203 Rabbit Polyclonal Antibody - Protocols

Provided below are standard protocols that you may find useful for product applications.

- [Western Blot](#)
- [Blocking Peptides](#)
- [Dot Blot](#)
- [Immunohistochemistry](#)
- [Immunofluorescence](#)
- [Immunoprecipitation](#)
- [Flow Cytometry](#)

- [Cell Culture](#)

CT203 Rabbit Polyclonal Antibody - Images



Western blot analysis of lysates from 293T cells, primary antibody was diluted at 1:1000, 4° over night