

**FAM9C Rabbit Polyclonal Antibody**  
**FAM9C Rabbit Polyclonal Antibody**  
Catalog # AP93320**Specification**

---

**FAM9C Rabbit Polyclonal Antibody - Product Information**

Application	WB
Primary Accession	<a href="#">Q8IZT9</a>
Reactivity	Rat, Human
Host	Polyclonal, Rabbit, IgG
Clonality	Polyclonal
Calculated MW	19210

**FAM9C Rabbit Polyclonal Antibody - Additional Information****Gene ID** 171484**Other Names**

Protein FAM9C, FAM9C (&lt;a href="http://www.genenames.org/cgi-bin/gene\_symbol\_report?hgnc\_id=18405" target="\_blank"&gt;HGNC:18405&lt;/a&gt;)

**Storage Conditions**

-20°C

**FAM9C Rabbit Polyclonal Antibody - Protein Information****Name** FAM9C ([HGNC:18405](#))**Cellular Location**

Nucleus.

**Tissue Location**

Expressed exclusively in testis.

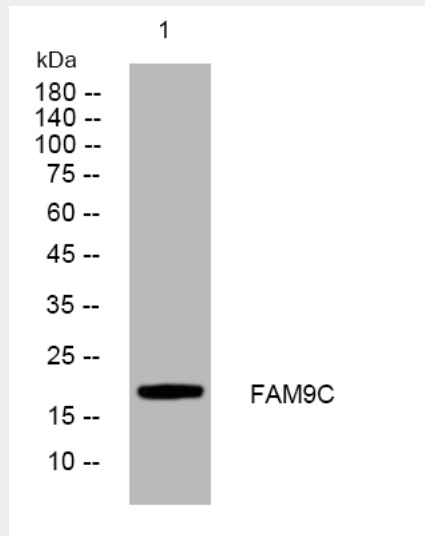
**FAM9C Rabbit Polyclonal Antibody - Protocols**

Provided below are standard protocols that you may find useful for product applications.

- [Western Blot](#)
- [Blocking Peptides](#)
- [Dot Blot](#)
- [Immunohistochemistry](#)
- [Immunofluorescence](#)
- [Immunoprecipitation](#)
- [Flow Cytometry](#)

- [Cell Culture](#)

### FAM9C Rabbit Polyclonal Antibody - Images



Western blot analysis of lysates from 3T3 cells, primary antibody was diluted at 1:1000, 4° over night

### FAM9C Rabbit Polyclonal Antibody - Background

This gene is a member of a gene family which arose through duplication on the X chromosome. The encoded protein may be localized to the nucleus as the protein contains several nuclear localization signals, and has similarity to a synaptonemal complex protein. [provided by RefSeq, Aug 2011],