

SPR2D Rabbit Polyclonal Antibody
SPR2D Rabbit Polyclonal Antibody
Catalog # AP93316

Specification

SPR2D Rabbit Polyclonal Antibody - Product Information

Application	IHC, IF
Primary Accession	P22532
Reactivity	Human, Mouse
Host	Polyclonal, Rabbit, IgG
Clonality	Polyclonal
Calculated MW	7905

SPR2D Rabbit Polyclonal Antibody - Additional Information

Gene ID 6703

Other Names

Small proline-rich protein 2D, SPR-2D, Small proline-rich protein II, SPR-II, SPRR2D

Storage Conditions

-20°C

SPR2D Rabbit Polyclonal Antibody - Protein Information

Name SPRR2D

Function

Cross-linked envelope protein of keratinocytes. It is a keratinocyte protein that first appears in the cell cytosol, but ultimately becomes cross-linked to membrane proteins by transglutaminase. All that results in the formation of an insoluble envelope beneath the plasma membrane.

Cellular Location

Cytoplasm.

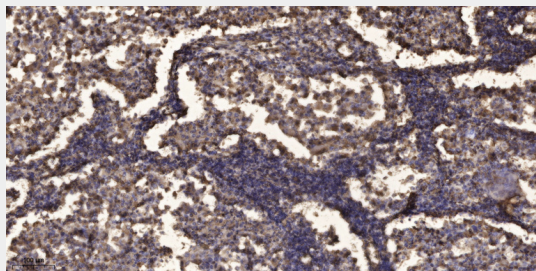
SPR2D Rabbit Polyclonal Antibody - Protocols

Provided below are standard protocols that you may find useful for product applications.

- [Western Blot](#)
- [Blocking Peptides](#)
- [Dot Blot](#)
- [Immunohistochemistry](#)
- [Immunofluorescence](#)
- [Immunoprecipitation](#)
- [Flow Cytometry](#)

- [Cell Culture](#)

SPR2D Rabbit Polyclonal Antibody - Images



Immunohistochemical analysis of paraffin-embedded human Squamous cell carcinoma of lung. 1, Antibody was diluted at 1:200(4° overnight). 2, Tris-EDTA,pH9.0 was used for antigen retrieval. 3,Secondary antibody was diluted at 1:200(room temperature, 45min).