

BAGE1 Rabbit Polyclonal Antibody
BAGE1 Rabbit Polyclonal Antibody
Catalog # AP93304

Specification

BAGE1 Rabbit Polyclonal Antibody - Product Information

Application	IHC, IF
Primary Accession	Q13072
Reactivity	Rat, Human
Host	Polyclonal, Rabbit, IgG
Clonality	Polyclonal
Calculated MW	4810

BAGE1 Rabbit Polyclonal Antibody - Additional Information

Gene ID 574

Other Names

B melanoma antigen 1, B melanoma antigen, Antigen MZ2-BA, Cancer/testis antigen 2.1, CT2.1, BAGE, BAGE1

Storage Conditions

-20°C

BAGE1 Rabbit Polyclonal Antibody - Protein Information

Name BAGE

Synonyms BAGE1

Function

Unknown. Antigen recognized on a melanoma by autologous cytolytic T-lymphocytes.

Cellular Location

Secreted.

Tissue Location

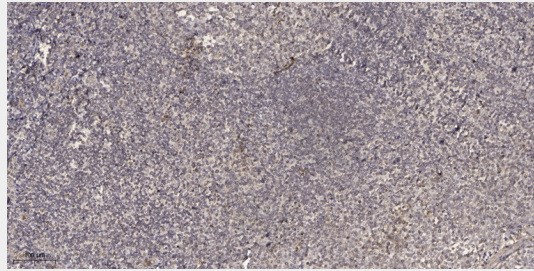
Not expressed in normal tissues, except in testis. Expressed with significant proportion in melanomas, but also in tumors of various histological origins, such as bladder carcinomas, head and neck squamous cell carcinomas, lung and breast carcinomas. Not expressed in renal, colorectal and prostatic carcinomas, leukemias and lymphomas. More frequently expressed in metastatic melanomas than in primary melanomas

BAGE1 Rabbit Polyclonal Antibody - Protocols

Provided below are standard protocols that you may find useful for product applications.

- [Western Blot](#)
- [Blocking Peptides](#)
- [Dot Blot](#)
- [Immunohistochemistry](#)
- [Immunofluorescence](#)
- [Immunoprecipitation](#)
- [Flow Cytometry](#)
- [Cell Culture](#)

BAGE1 Rabbit Polyclonal Antibody - Images



Immunohistochemical analysis of paraffin-embedded human tonsil. 1, Antibody was diluted at 1:200(4° overnight). 2, Tris-EDTA,pH9.0 was used for antigen retrieval. 3,Secondary antibody was diluted at 1:200(room temperature, 30min).

BAGE1 Rabbit Polyclonal Antibody - Background

This gene encodes a tumor antigen recognized by autologous cytolytic lymphocytes (CTL).
[provided by RefSeq, Jul 2008],