

Anti-PARP12 Antibody
Rabbit polyclonal antibody to PARP12
Catalog # AP93294

Specification

Anti-PARP12 Antibody - Product Information

Application	WB
Primary Accession	O9H0J9
Other Accession	O8BZ20
Reactivity	Human, Mouse, Rat
Host	Rabbit
Clonality	Polyclonal
Calculated MW	79064

Anti-PARP12 Antibody - Additional Information

Gene ID 64761

Other Names

ZC3HDC1; Poly [ADP-ribose] polymerase 12; PARP-12; ADP-ribosyltransferase diphtheria toxin-like 12; ARTD12; Zinc finger CCCH domain-containing protein 1

Dilution

WB~~WB (1/500 - 1/2000)

Format

Liquid in 0.42% Potassium phosphate, 0.87% Sodium chloride, pH 7.3, 30% glycerol, and 0.01% sodium azide.

Storage

Store at -20 °C. Stable for 12 months from date of receipt

Anti-PARP12 Antibody - Protein Information

Name PARP12 {ECO:0000303|PubMed:20106667, ECO:0000312|HGNC:HGNC:21919}

Function

Mono-ADP-ribosyltransferase that mediates mono-ADP- ribosylation of target proteins.

Cellular Location

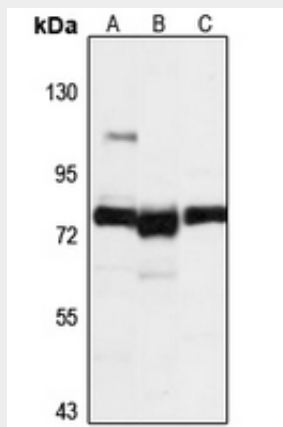
Nucleus.

Anti-PARP12 Antibody - Protocols

Provided below are standard protocols that you may find useful for product applications.

- [Western Blot](#)
- [Blocking Peptides](#)
- [Dot Blot](#)
- [Immunohistochemistry](#)
- [Immunofluorescence](#)
- [Immunoprecipitation](#)
- [Flow Cytometry](#)
- [Cell Culture](#)

Anti-PARP12 Antibody - Images



Western blot analysis of PARP12 expression in HeLa (A), mouse liver (B), rat brain (C) whole cell lysates.

Anti-PARP12 Antibody - Background

Recombinant fusion protein of human PARP12. The exact sequence is proprietary.