

**Anti-FABP6 Antibody**  
Rabbit polyclonal antibody to FABP6  
Catalog # AP93283

**Specification**

---

**Anti-FABP6 Antibody - Product Information**

Application	WB, IF
Primary Accession	<a href="#">P51161</a>
Other Accession	<a href="#">P51162</a>
Reactivity	Human, Mouse
Host	Rabbit
Clonality	Polyclonal

**Anti-FABP6 Antibody - Additional Information**

Gene ID 2172

**Other Names**

ILBP; ILLBP; Gastrotropin; GT; Fatty acid-binding protein 6; Ileal lipid-binding protein; ILBP; Intestinal 15 kDa protein; I-15P; Intestinal bile acid-binding protein; I-BABP

**Target/Specificity**

Recognizes endogenous levels of FABP6 protein.

**Dilution**

WB~~WB (1/500 - 1/1000)  
IF~~IF/IC (1/50 - 1/200)

**Format**

Liquid in 0.42% Potassium phosphate, 0.87% Sodium chloride, pH 7.3, 30% glycerol, and 0.01% sodium azide.

**Storage**

Store at -20 °C. Stable for 12 months from date of receipt

**Anti-FABP6 Antibody - Protein Information**

**Name** FABP6

**Synonyms** ILBP, ILLBP

**Function**

Binds to bile acids and is involved in enterohepatic bile acid metabolism. Required for efficient apical to basolateral transport of conjugated bile acids in ileal enterocytes (By similarity). In vitro binds to bile acids in the order: deoxycholic acid > cholic acid > chenodeoxycholic acid and respective BA conjugation modifies affinities in the order taurine-conjugated > glycine-conjugated > unconjugated bile acids. Stimulates gastric acid and pepsinogen secretion (By similarity).

### Cellular Location

[Isoform 1]: Cytoplasm {ECO:0000250|UniProtKB:P80020}. Membrane; Peripheral membrane protein {ECO:0000250|UniProtKB:P50119}; Cytoplasmic side {ECO:0000250|UniProtKB:P50119}

### Tissue Location

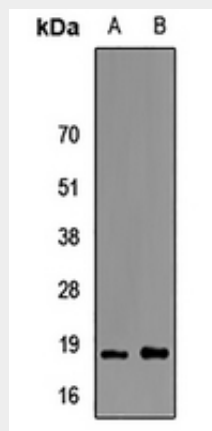
Isoform 1 is expressed in the jejunum, ileum, cecum and ascending colon intestine. Isoform 2 is expressed in the gallbladder, duodenum, jejunum, ileum, cecum, ascending, transverse and descending colon, sigmoid colon and rectum. Isoform 2 is expressed in colorectal adenocarcinomas and their adjacent normal mucosa (at protein level).

### Anti-FABP6 Antibody - Protocols

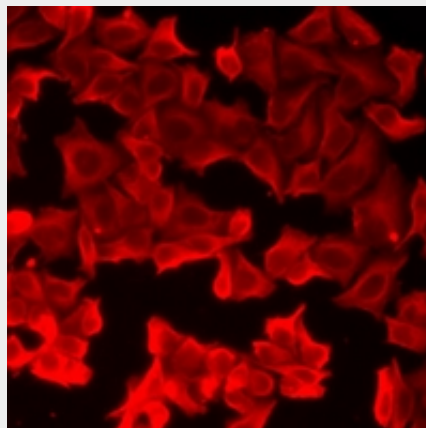
Provided below are standard protocols that you may find useful for product applications.

- [Western Blot](#)
- [Blocking Peptides](#)
- [Dot Blot](#)
- [Immunohistochemistry](#)
- [Immunofluorescence](#)
- [Immunoprecipitation](#)
- [Flow Cytometry](#)
- [Cell Culture](#)

### Anti-FABP6 Antibody - Images



Western blot analysis of FABP6 expression in MCF7 (A), A375 (B) whole cell lysates.



Immunofluorescent analysis of FABP6 staining in A549 cells. Formalin-fixed cells were permeabilized with 0.1% Triton X-100 in TBS for 5-10 minutes and blocked with 3% BSA-PBS for 30 minutes at room temperature. Cells were probed with the primary antibody in 3% BSA-PBS and incubated overnight at 4 °C in a humidified chamber. Cells were washed with PBST and incubated with a DyLight 594-conjugated secondary antibody (red) in PBS at room temperature in the dark.

#### **Anti-FABP6 Antibody - Background**

KLH-conjugated synthetic peptide encompassing a sequence within the C-term region of human FABP6. The exact sequence is proprietary.