

**RPLP2 Antibody (N-Term)**  
**Affinity Purified Rabbit Polyclonal Antibody (Pab)**  
**Catalog # AP9327a**

**Specification**

---

**RPLP2 Antibody (N-Term) - Product Information**

Application	WB,E
Primary Accession	<a href="#">P05387</a>
Other Accession	<a href="#">P19943</a> , <a href="#">P99027</a> , <a href="#">P42899</a> , <a href="#">NP_000995</a>
Reactivity	Human
Predicted	Bovine, Mouse, Rabbit
Host	Rabbit
Clonality	Polyclonal
Isotype	Rabbit IgG
Antigen Region	13-41

**RPLP2 Antibody (N-Term) - Additional Information**

**Gene ID** 6181

**Other Names**

60S acidic ribosomal protein P2, Renal carcinoma antigen NY-REN-44, RPLP2, D11S2243E, RPP2

**Target/Specificity**

This RPLP2 antibody is generated from rabbits immunized with a KLH conjugated synthetic peptide between 13-41 amino acids from the N-terminal region of human RPLP2.

**Dilution**

WB~~1:1000

**Format**

Purified polyclonal antibody supplied in PBS with 0.09% (W/V) sodium azide. This antibody is purified through a protein A column, followed by peptide affinity purification.

**Storage**

Maintain refrigerated at 2-8°C for up to 2 weeks. For long term storage store at -20°C in small aliquots to prevent freeze-thaw cycles.

**Precautions**

RPLP2 Antibody (N-Term) is for research use only and not for use in diagnostic or therapeutic procedures.

**RPLP2 Antibody (N-Term) - Protein Information**

**Name** RPLP2

**Synonyms** D11S2243E, RPP2

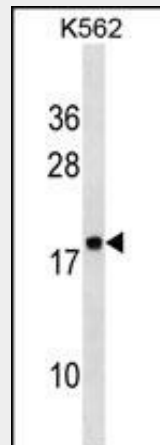
**Function** Plays an important role in the elongation step of protein synthesis.

### RPLP2 Antibody (N-Term) - Protocols

Provided below are standard protocols that you may find useful for product applications.

- [Western Blot](#)
- [Blocking Peptides](#)
- [Dot Blot](#)
- [Immunohistochemistry](#)
- [Immunofluorescence](#)
- [Immunoprecipitation](#)
- [Flow Cytometry](#)
- [Cell Culture](#)

### RPLP2 Antibody (N-Term) - Images



RPLP2 Antibody (N-Term) (Cat. #AP9327a) western blot analysis in K562 cell line lysates (35ug/lane). This demonstrates the RPLP2 antibody detected the RPLP2 protein (arrow).

### RPLP2 Antibody (N-Term) - Background

RPLP2 consists of a small 40S subunit and a large 60S subunit. Together these subunits are composed of 4 RNA species and approximately 80 structurally distinct proteins. This protein encodes a ribosomal phosphoprotein that is a component of the 60S subunit. The protein, which is a functional equivalent of the E. coli L7/L12 ribosomal protein, belongs to the L12P family of ribosomal proteins. It plays an important role in the elongation step of protein synthesis. Unlike most ribosomal proteins, which are basic, the encoded protein is acidic. Its C-terminal end is nearly identical to the C-terminal ends of the ribosomal phosphoproteins P0 and P1. The P2 protein can interact with P0 and P1 to form a pentameric complex consisting of P1 and P2 dimers, and a P0 monomer. The protein is located in the cytoplasm. As is typical for genes encoding ribosomal proteins, there are multiple processed pseudogenes of this gene dispersed through the genome.

### RPLP2 Antibody (N-Term) - References

Martinez-Azorin, F. FEBS Lett. 582 (20), 3029-3032 (2008) Martinez-Azorin, F. Biochem. J. 413 (3), 527-534 (2008) Sugiyama, N. Mol. Cell Proteomics 6 (6), 1103-1109 (2007)