

**ENTPD2 Antibody (N-term)**  
**Affinity Purified Rabbit Polyclonal Antibody (Pab)**  
**Catalog # AP9325a****Specification**

---

**ENTPD2 Antibody (N-term) - Product Information**

Application	WB, IHC-P, FC,E
Primary Accession	<a href="#">O9Y5L3</a>
Reactivity	Human
Host	Rabbit
Clonality	Polyclonal
Isotype	Rabbit IgG
Antigen Region	86-113

**ENTPD2 Antibody (N-term) - Additional Information****Gene ID** 954**Other Names**

Ectonucleoside triphosphate diphosphohydrolase 2, NTPDase 2, 361-, CD39 antigen-like 1, Ecto-ATP diphosphohydrolase 2, Ecto-ATPDase 2, Ecto-ATPase 2, ENTPD2, CD39L1

**Target/Specificity**

This ENTPD2 antibody is generated from rabbits immunized with a KLH conjugated synthetic peptide between 86-113 amino acids from the N-terminal region of human ENTPD2.

**Dilution**

WB~~1:2000  
IHC-P~~1:50~100  
FC~~1:25

**Format**

Purified polyclonal antibody supplied in PBS with 0.09% (W/V) sodium azide. This antibody is purified through a protein A column, followed by peptide affinity purification.

**Storage**

Maintain refrigerated at 2-8°C for up to 2 weeks. For long term storage store at -20°C in small aliquots to prevent freeze-thaw cycles.

**Precautions**

ENTPD2 Antibody (N-term) is for research use only and not for use in diagnostic or therapeutic procedures.

**ENTPD2 Antibody (N-term) - Protein Information****Name** ENTPD2**Synonyms** CD39L1

**Function** In the nervous system, could hydrolyze ATP and other nucleotides to regulate purinergic neurotransmission. Hydrolyzes ADP only to a marginal extent. The order of activity with different substrates is ATP > GTP > CTP = ITP > UTP >> ADP = UDP.

#### Cellular Location

[Isoform Long]: Cell membrane; Multi-pass membrane protein [Isoform gamma]: Endoplasmic reticulum membrane; Multi-pass membrane protein

#### Tissue Location

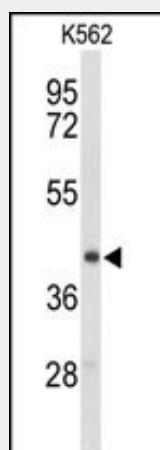
Brain, placenta, skeletal muscle, kidney, pancreas, heart, ovary, testis, colon, small intestine, prostate and pancreas. No expression in adult thymus, spleen, lung, liver and peripheral blood leukocytes

### ENTPD2 Antibody (N-term) - Protocols

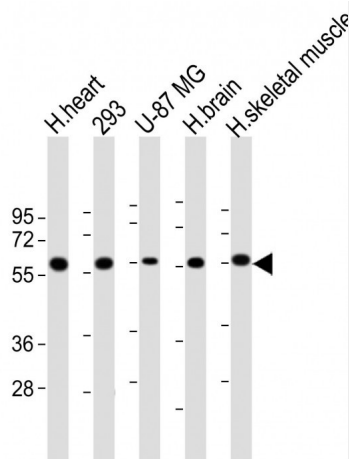
Provided below are standard protocols that you may find useful for product applications.

- [Western Blot](#)
- [Blocking Peptides](#)
- [Dot Blot](#)
- [Immunohistochemistry](#)
- [Immunofluorescence](#)
- [Immunoprecipitation](#)
- [Flow Cytometry](#)
- [Cell Culture](#)

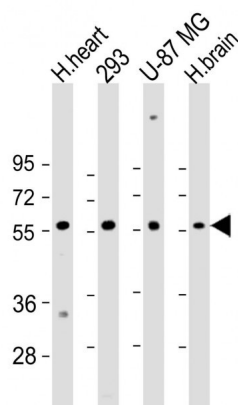
### ENTPD2 Antibody (N-term) - Images



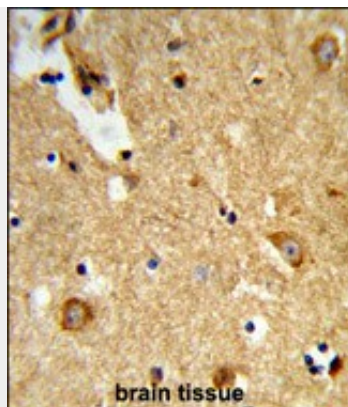
Western blot analysis of ENTPD2 Antibody (N-term) (Cat. #AP9325a) in K562 cell line lysates (35ug/lane). ENTPD2 (arrow) was detected using the purified Pab.



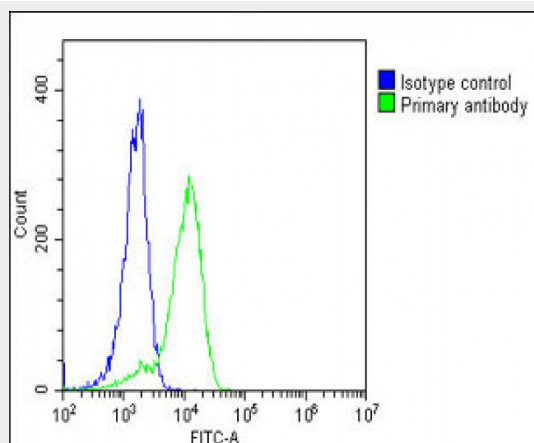
All lanes : Anti-ENTPD2 Antibody at 1:1000 dilution Lane 1: human heart lysate Lane 2: 293 whole cell lysate Lane 3: U-87 MG whole cell lysate Lane 4: human brain lysate Lane 5: human skeletal muscle lysate Lysates/proteins at 20 µg per lane. Secondary Goat Anti-Rabbit IgG, (H+L), Peroxidase conjugated at 1/10000 dilution. Predicted band size : 54 kDa Blocking/Dilution buffer: 5% NFDM/TBST.



All lanes : Anti-ENTPD2 Antibody (N-term) at 1:2000 dilution Lane 1: H.heart lysate Lane 2: 293 whole cell lysate Lane 3: U-87 MG whole cell lysate Lane 4: H.brain whole cell lysate Lysates/proteins at 20 µg per lane. Secondary Goat Anti-Rabbit IgG, (H+L), Peroxidase conjugated at 1/10000 dilution. Predicted band size : 54 kDa Blocking/Dilution buffer: 5% NFDM/TBST.



Formalin-fixed and paraffin-embedded human brain tissue reacted with ENTPD2 Antibody (N-term), which was peroxidase-conjugated to the secondary antibody, followed by DAB staining. This data demonstrates the use of this antibody for immunohistochemistry; clinical relevance has not been evaluated.



Overlay histogram showing K562 cells stained with AP9325a (green line). The cells were fixed with 2% paraformaldehyde (10 min). The cells were then incubated in 2% bovine serum albumin to block non-specific protein-protein interactions followed by the antibody (AP9325a, 1:25 dilution) for 60 min at 37°C. The secondary antibody used was Goat-Anti-Rabbit IgG, DyLight® 488 Conjugated Highly Cross-Adsorbed (OH191631) at 1/200 dilution for 40 min at 37°C. Isotype control antibody (blue line) was rabbit IgG1 (1 µg/1x10<sup>6</sup> cells) used under the same conditions. Acquisition of >10,000 events was performed.

### ENTPD2 Antibody (N-term) - Background

ENTPD2 is the type 2 enzyme of the ecto-nucleoside triphosphate diphosphohydrolase family (E-NTPDase). E-NTPDases are a family of ecto-nucleosidases that hydrolyze 5'-triphosphates. This ecto-ATPase is an integral membrane protein.

### ENTPD2 Antibody (N-term) - References

- Chiang, W.C. Biochemistry 47 (33), 8775-8785 (2008)
- Javed, R. Biochemistry 46 (22), 6617-6627 (2007)
- Mukasa, T. Biochemistry 44 (33), 11160-11170 (2005)