

**Phospho-P70 S6 Kinase beta (S371) Antibody**  
Rabbit mAb  
Catalog # AP93208

**Specification**

---

**Phospho-P70 S6 Kinase beta (S371) Antibody - Product Information**

Application	WB
Primary Accession	<a href="#">O9UBS0</a>
Reactivity	Rat
Clonality	Monoclonal
<b>Other Names</b>	
p70 beta; P70S6K2; p70S6Kb; Rps6kb2; S6K beta 2; S6K beta; S6K2; SRK; STK14B;	
Isotype	Rabbit IgG
Host	Rabbit
Calculated MW	53455 Da

**Phospho-P70 S6 Kinase beta (S371) Antibody - Additional Information**

Purification	Affinity-chromatography
Immunogen	A synthesized peptide derived from human Phospho-P70 S6 Kinase beta (S371)
Description	Phosphorylates specifically ribosomal protein S6.
Storage Condition and Buffer	Rabbit IgG in phosphate buffered saline , pH 7.4, 150mM NaCl, 0.02% sodium azide and 50% glycerol. Store at +4°C short term. Store at -20°C long term. Avoid freeze / thaw cycle.

**Phospho-P70 S6 Kinase beta (S371) Antibody - Protein Information**

**Name** RPS6KB2

**Synonyms** STK14B

**Function**

Phosphorylates specifically ribosomal protein S6 (PubMed:<a href="http://www.uniprot.org/citations/29750193" target="\_blank">29750193</a>). Seems to act downstream of mTOR signaling in response to growth factors and nutrients to promote cell proliferation, cell growth and cell cycle progression in an alternative pathway regulated by MEAK7 (PubMed:<a href="http://www.uniprot.org/citations/29750193" target="\_blank">29750193</a>).

**Cellular Location**

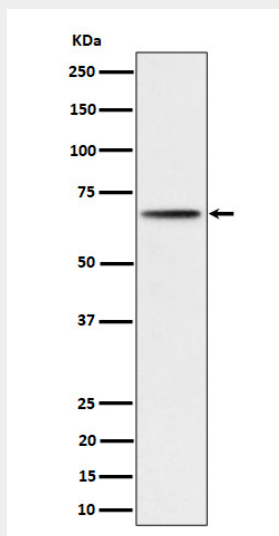
Cytoplasm. Nucleus.

**Phospho-P70 S6 Kinase beta (S371) Antibody - Protocols**

Provided below are standard protocols that you may find useful for product applications.

- [Western Blot](#)
- [Blocking Peptides](#)
- [Dot Blot](#)
- [Immunohistochemistry](#)
- [Immunofluorescence](#)
- [Immunoprecipitation](#)
- [Flow Cytometry](#)
- [Cell Culture](#)

#### Phospho-P70 S6 Kinase beta (S371) Antibody - Images



Western blot analysis of Phospho-P70 S6 Kinase beta (S371) expression in 293 cell lysate.