

Phospho-BCAR1 (Y410) Antibody
Rabbit mAb
Catalog # AP93207**Specification****Phospho-BCAR1 (Y410) Antibody - Product Information**

Application	WB
Primary Accession	P56945
Clonality	Monoclonal

Other Names

BCAR 1; Bcar1; Breast cancer anti estrogen resistance 1 Breast cancer anti-estrogen resistance protein 1; CAS; Cas scaffolding protein family member 1; CAS1; Cass1; Crk associated substrate; Crk associated substrate p130Cas; CRK-associated substrate; CRKAS; p130cas;

Isotype	Rabbit IgG
Host	Rabbit
Calculated MW	93372 Da

Phospho-BCAR1 (Y410) Antibody - Additional Information

Purification	Affinity-chromatography
Immunogen	A synthesized peptide derived from human Phospho-BCAR1 (Y410)
Description	Docking protein which plays a central coordinating role for tyrosine kinase-based signaling related to cell adhesion. Implicated in induction of cell migration. Overexpression confers antiestrogen resistance on breast cancer cells.
Storage Condition and Buffer	Rabbit IgG in phosphate buffered saline , pH 7.4, 150mM NaCl, 0.02% sodium azide and 50% glycerol. Store at +4°C short term. Store at -20°C long term. Avoid freeze / thaw cycle.

Phospho-BCAR1 (Y410) Antibody - Protein Information**Name** BCAR1**Synonyms** CAS, CASS1, CRKAS**Function**

Docking protein which plays a central coordinating role for tyrosine kinase-based signaling related to cell adhesion (PubMed: [12432078](http://www.uniprot.org/citations/12432078), PubMed: [12832404](http://www.uniprot.org/citations/12832404)). Implicated in induction of cell migration and cell branching (PubMed: [12432078](http://www.uniprot.org/citations/12432078), PubMed: [12832404](http://www.uniprot.org/citations/12832404), PubMed: [17038317](http://www.uniprot.org/citations/17038317)).

Involved in the BCAR3-mediated inhibition of TGFB signaling (By similarity).

Cellular Location

Cell junction, focal adhesion. Cytoplasm Cell projection, axon {ECO:0000250|UniProtKB:Q61140}
Note=Unphosphorylated form localizes in the cytoplasm (By similarity) Localizes to focal adhesion sites following integrin engagement (By similarity). {ECO:0000250|UniProtKB:Q61140}

Tissue Location

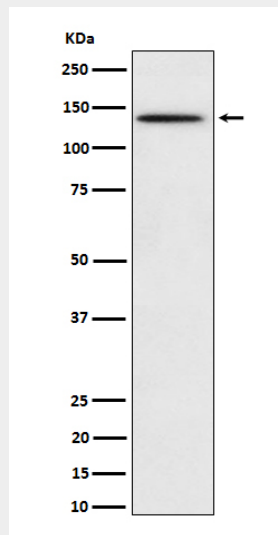
Expressed in B-cells (at protein level) (PubMed:9020138). Widely expressed with an abundant expression in the testis (PubMed:10639512). Low level of expression seen in the liver, thymus, and peripheral blood leukocytes (PubMed:10639512)

Phospho-BCAR1 (Y410) Antibody - Protocols

Provided below are standard protocols that you may find useful for product applications.

- [Western Blot](#)
- [Blocking Peptides](#)
- [Dot Blot](#)
- [Immunohistochemistry](#)
- [Immunofluorescence](#)
- [Immunoprecipitation](#)
- [Flow Cytometry](#)
- [Cell Culture](#)

Phospho-BCAR1 (Y410) Antibody - Images



Western blot analysis of Phospho-BCAR1 (Y410) expression in HeLa treated with pervanadate cell lysate.